

# Public Lighting and Electrical Infrastructure Asset Management Plan



CITY OF  
ADELAIDE







## Contents

<b>1</b>	EXECUTIVE SUMMARY	4
<b>2</b>	INTRODUCTION	16
<b>3</b>	LEVELS OF SERVICE	23
<b>4</b>	FUTURE DEMAND	35
<b>5</b>	LIFECYCLE MANAGEMENT PLAN	40
	RISK MANAGEMENT PLANNING	52
<b>7</b>	FINANCIAL SUMMARY	59
<b>8</b>	PLAN IMPROVEMENT AND MONITORING	65
<b>9</b>	REFERENCES	68
<b>10</b>	APPENDICES	69

# 1.0 EXECUTIVE SUMMARY

## 1.1 The Purpose of the Plan

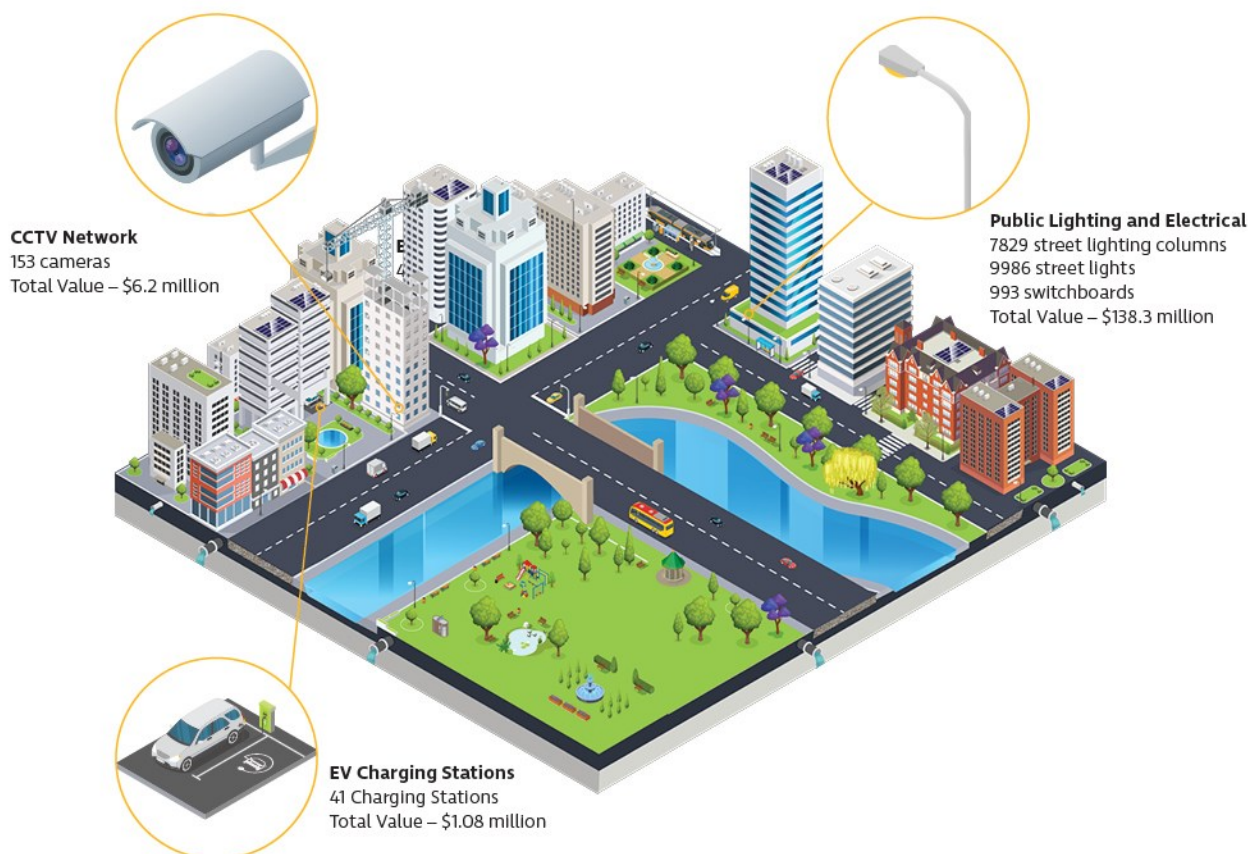
The City of Adelaide is responsible for an extensive and diverse asset portfolio valued at more than \$2 billion, which represents a significant investment made over multiple generations. These assets play a vital role in providing essential services to our community and it is critical to ensure these assets continue to be effectively managed to enable ongoing service provision and benefits for both current and future generations.

Under South Australia's *Local Government Act 1999*, we are required to develop Asset Management Plans for a period of at least 10 years, which includes information about the operation, maintenance, renewal, acquisition, expansion, upgrade and disposal for each infrastructure assets class under our care and control.

The City of Adelaide has six Asset Management Plans, which includes Public Lighting and Electrical Infrastructure, Transportation, Park Lands & Open Space, Buildings, Water Infrastructure, and Urban Elements.

The fundamental purpose of this Public Lighting and Electrical Infrastructure Asset Management Plan is to outline the Council's high-level asset management priorities for the operation, maintenance and renewal of our assets over the next 10 years. Additionally, it aims to improve the long-term strategic management of our Public Lighting and Electrical Infrastructure assets, to cater for the community's required levels of service both now and into the future.

Work is currently underway to significantly improve the spatial data, asset condition information and asset attribute information utilised within this Public Lighting and Electrical Infrastructure Asset Management Plan. These activities align with good asset management practices and will provide more granular information to enable robust analysis to inform future decision making. The outcome of this work, which is due for completion by June 2025, will enable a more mature Public Lighting and Electrical Infrastructure Asset Management Plan with a higher degree of confidence for the future requirements of the asset class.





Therefore, due to the current maturity level of the asset data, this Public Lighting and Electrical Infrastructure Asset Management Plan will be considered an interim document, which will be updated following the completion of the spatial data improvements, condition audit, and subsequent modelling and analysis.

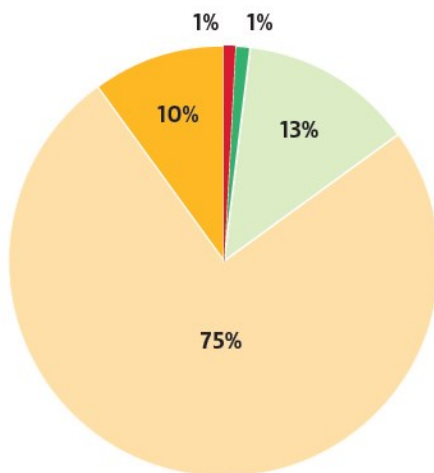
This interim plan defines the current state of our \$145.6 million Public Lighting and Electrical Infrastructure asset portfolio, as well as the asset management activities and associated funding requirements recommended for inclusion into the Long-Term Financial Plan.

## 1.2 Our Public Lighting and Electrical Infrastructure Assets

The City of Adelaide’s Public Lighting and Electrical Infrastructure network is valued at approximately \$145.6 million and provides services that facilitate safe access and enjoyment of the city and its amenities at night, in conjunction with supporting pedestrians, cyclists, motorists move into and around the city and Park Lands. These assets include street lighting, electrical reticulation infrastructure (i.e. cables, conduits and switchboards), CCTV cameras and EV charging stations.

Our Public Lighting assets consists of several different ownership and responsibility models. Some Public Lighting Assets are owned and operated entirely by City of Adelaide, some are owned entirely by South Australian Power Networks (SAPN), where we pay a contribution by way of a tariff for the maintenance and operation of these Public Lighting assets and some are a hybrid of City of Adelaide and SAPN ownership where Council own the luminaire (light fitting) and SAPN own the supporting structure (pole). Under a hybrid arrangement we also contribute to the maintenance and operation by way of a tariff.

To monitor the performance of our Public Lighting and Electrical Infrastructure assets, we undertake condition audits at regular intervals. Asset condition information is analysed with respect to technical intervention criteria to inform our maintenance and renewal programs. The current condition of our Public Lighting and Electrical Infrastructure is generally rated in a fair condition, with an overall condition index rating of 3.0. 89% of assets are rated in a very good to fair condition and 11% of assets are rated in poor or very poor condition, which form the general basis of our renewal program priorities.



Condition Grading	Description of Condition
1	<b>Very Good:</b> free of defects, only planned and/or routine maintenance required
2	<b>Good:</b> minor defects, increasing maintenance required plus planned maintenance
3	<b>Fair:</b> defects requiring regular and/or significant maintenance to reinstate service
4	<b>Poor:</b> significant defects, higher order cost intervention likely
5	<b>Very Poor:</b> physically unsound and/or beyond rehabilitation, immediate action required

It is important to note that this condition data is considered to be of low reliability, as the last full condition audit for our public lighting and electrical infrastructure was undertaken in 2018. Work is currently progressing with data cleansing to improve the overall data set for the asset categories referenced within this Asset Management Plan. In 2024 a condition audit for our Public Lighting and Electrical Infrastructure will commence to collect condition data to align with the updated spatial data and inform updates to this Asset Management Plan.



### 1.3 Community Engagement & Customer Satisfaction

In November 2021, we undertook an engagement process with city residents and visitors to better understand and measure levels of customer satisfaction for the services provided by our Public Lighting and Electrical Infrastructure assets. A summary of the responses is shown below.

Category	Average Score	Not Measured	Very Poor (<40%)	Poor (40–54%)	Average (55–69%)	Good (70–85%)	Excellent (>85%)
Public Lighting	62.5%				●		
CCTV Cameras	–	●					
EV Charging Stations	–	●					

For this Asset Management Plan, feedback was not sought for CCTV Cameras or Electric Vehicle Charging Stations, however ensuring this feedback is collected in the future has been recognised as an action within the Improvement Plan of this Asset Management Plan (Chapter 8).

The overall feedback confirmed appropriate levels of customer satisfaction for the maintenance and renewal of our existing public lighting and electrical infrastructure assets. Engagement did identify some locations where the community believed public lighting provisions could be improved. These locations were typically associated with city streets where public lighting infrastructure was owned and operated by SAPN and Park Lands locations where public lighting was not currently present. It is anticipated that the completion of the Public Lighting Strategy (currently under development) and the subsequent initiation, funding and delivery of new and upgrade Public Lighting projects, in conjunction with continuing to work with South Australian Power Networks to convert luminaires over to LED technology will incrementally bridge the gap between customer expectations and service provisions over time.

A Recommended Levels of Service Report was presented to Council, with the recommendations approved in October 2022. This report noted the community consultation undertaken and the associated benchmarking of current user satisfaction. Additionally, Council approved the development of the Public Lighting and Electrical Infrastructure Asset Management Plan based on the planning principles and recommended management strategies presented within the reports and its attachments.





## 1.4 Current and Future Demands

It is anticipated that the City of Adelaide will be subject to considerable change over the next ten years. This will result in our Public Lighting and Electrical Infrastructure assets being subject to new demands that have the potential to impact future service delivery and the requirements of our assets.

Key demand drivers and future challenges will include:

- City growth
- Changing demographic and user groups
- Tourism and event growth
- Climate change and carbon neutrality
- Emerging technology
- Legislation and regulation

Demand for new services will be managed through a combination of managing existing assets, upgrading existing assets, providing new assets and demand management. Demand management practices can include non-asset solutions, such as educating the community around alternative options, which facilitates service provision without the need to invest in new or upgraded infrastructure.

Demand management will include:

- Continuing to engage with our community through annual City User Profile surveys
- Finalising the Public Lighting Strategy (2024)
- Finalising the Integrated Transport Strategy (2024)
- Delivering priority upgrade/new projects identified within the Strategic Plan and strategic documents
- Ensuring climate risk mitigation and adaptation is a key focus for strategic planning, asset management and project delivery
- Continuing to review and update design standards and technical specifications to ensure our assets transition towards having a lower carbon footprint with improved circular economy outcomes through increased usage of recycled materials
- Continuing to partner with industry, to monitor and evaluate new and emerging technologies, with trials of new materials, approaches, and methodologies to inform appropriate changes to standards and practices
- Continuing to monitor changes to legislation and ensure appropriate adaptation into asset management practices





## 1.5 Strategic Planning

Under the *Local Government Act (SA) 1999*, we are legislatively required to establish a suite of Strategic Management Plans, which guide Council's future planning, asset management and financial sustainability. An overview of these strategic management plans are shown below:

<b>Strategic Plan</b> <i>Community</i>	Long term with a four year delivery focus. <i>Planning for the vision and aspirations of the Adelaide Capital City.</i>
<b>Long-Term Financial Plan</b> <i>Financial</i>	Ten year Plan, revised annually to ensure a ten year view is maintained. <i>Planning for the long-term financial sustainability of the City of Adelaide.</i>
<b>Asset Management Plans</b> <i>Infrastructure</i>	Suite of ten year Plans. <i>Planning for the sustainable renewal and maintenance of Council assets.</i>
<b>City Plan</b> <i>Development / Built Form</i>	Ten year Spatial Plan. <i>Planning for the future land uses and built form of the Adelaide Capital City.</i>

Through the City of Adelaide Strategic Plan 2024 – 2028, Council's vision is:

### **Our Adelaide. Bold. Aspirational. Innovative.**

Achieving our vision for the future will be guided by our long term aspirations:

- Our Community:** Vibrant, connected and inclusive
- Our Environment:** Resilient, protected and sustainable
- Our Economy:** Growing, innovative and responsive
- Our Places:** Interesting, purposeful and safe
- Our Corporation:** High performing, customer-centric and bold

As Adelaide grows, we will need to consider economic vitality, social connectivity and wellbeing, distinctive precincts, environmental and financial sustainability, asset management and service delivery. To ensure we maintain our liveability and to support growth, these principles will underpin everything we do:

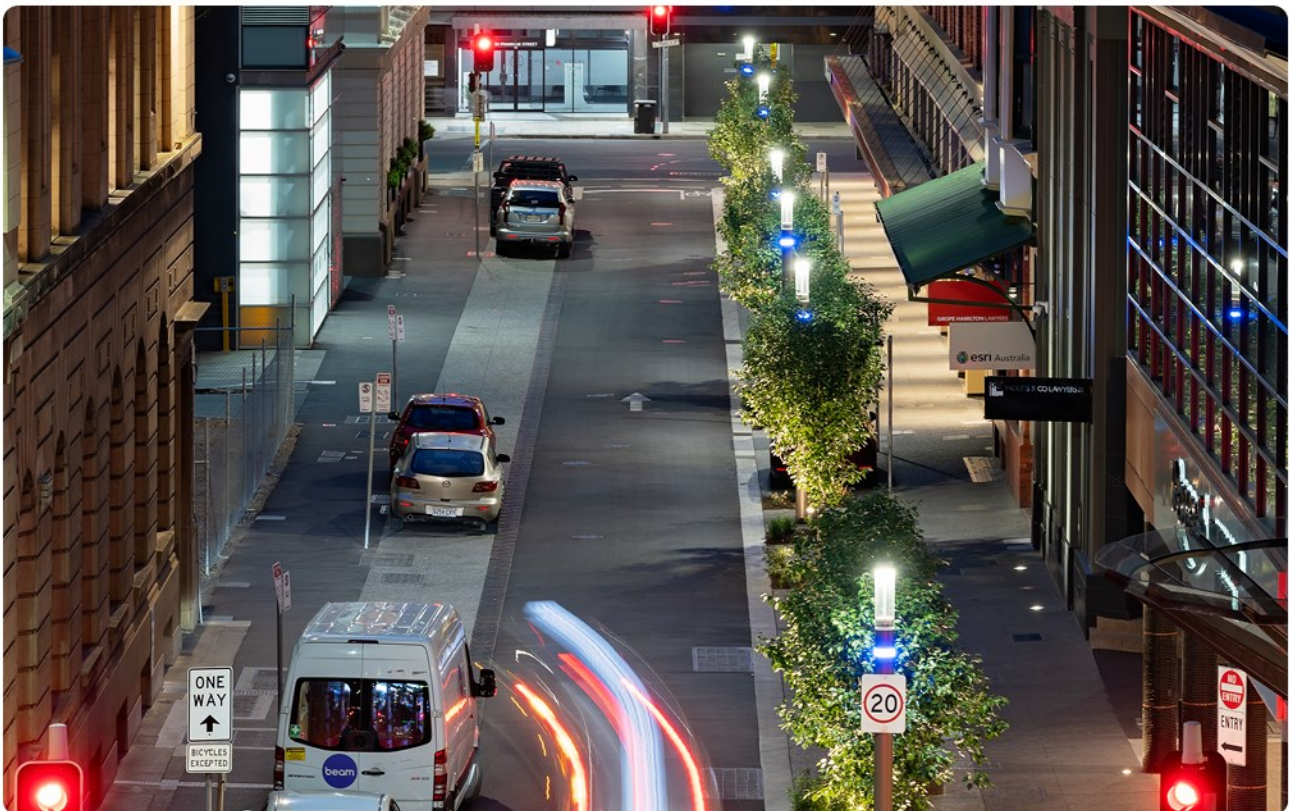
- Exceptional Amenity – Be bold and courageous in our pursuit of excellence for our city
- Quality Housing – Strive for liveability and affordability to attract and retain residents
- Community Connection – Strengthen connection, accessibility, diversity and inclusivity by putting people first
- Unique Experiences – Create interesting experiences for our residents, workers and visitors
- Climate Resilience – Embed climate resilience in all that we do
- Economic Growth – Encourage innovation, investment and development in current and emerging sectors
- Budget Repair – Provide quality services and ensure long-term financial sustainability

The Strategic Plan is supported by a suite of long and short-term strategies and action plans as well as a Resource Plan. The Resource Plan provides a four-year view of new and upgrade projects, resources, and budget requirements to deliver our Strategic Plan aspirations and objectives.



Integrated Delivery Planning ensures that prudent and efficient decisions are made, with line-of-sight between Council’s Strategic Plan objectives and the major infrastructure projects we deliver. While this Asset Management Plan does not identify financial forecasts associated with new and upgrade projects, it does ensure required asset renewals are aligned (where practical) with key new and upgrade projects specified within the Resource Plan.

Each year our annual business plan and budget formalises funding allocations to continue providing services and progress new projects. It enables existing projects to move from one delivery stage to the next (eg progress concept design to detailed design and detailed design to construction) as well as consider emerging risks and opportunities that may result from Council decisions, community requests or other external factors.





## 1.6 Lifecycle Management

In order to effectively manage our assets, it is important to understand the relationship between all stages of the asset lifecycle. Effective asset management and sustainable financial planning requires a balance between the maintenance, renewal and disposal of existing assets and the delivery of new and upgraded assets.

Our goal is to provide assets that service the needs of the community, providing the agreed levels of service at the lowest lifecycle cost. To enable this, it is important to understand:

- How our assets are performing
- How our assets should be operated and maintained
- When our assets should be renewed
- When we should consider upgrading existing assets or constructing new assets
- How funding for new and upgraded assets is prioritised
- When we should consider disposing underperforming or underutilised assets





This Asset Management Plan's renewal strategy aims to minimise the number of assets that deteriorate into a poor condition and prohibit assets reaching a very poor condition. This strategy ensures we can continue to provide services in line with the community's expectations, appropriately manage risk and optimise whole-of-life costs. Renewal requirements have been identified through a combination of workshops with key infrastructure and maintenance staff and available condition audit information.

While we have proactive maintenance programs associated with legislative requirements, general operational and maintenance activities are typically evaluated and prioritised with respect to budget provisions within the Long-Term Financial Plan and Annual Business Plan and Budget. Following the completion of this Asset Management Plan, we will be reviewing operations and maintenance standards for Public Lighting and Electrical Infrastructure assets, with a view to develop more structured and proactive maintenance regimes which provide an acceptable balance between cost, risk, and customer expectations. The associated financial impacts will need to be further considered in future revisions of this Asset Management Plan and the Long-Term Financial Plan.

This Asset Management Plan does not identify financial forecasts associated with asset disposal, however where recommended, significant assets will be identified for decommissioning and disposal through Council Reports, to then be considered within the Long-Term Financial Plan and Business Plan and Budget.



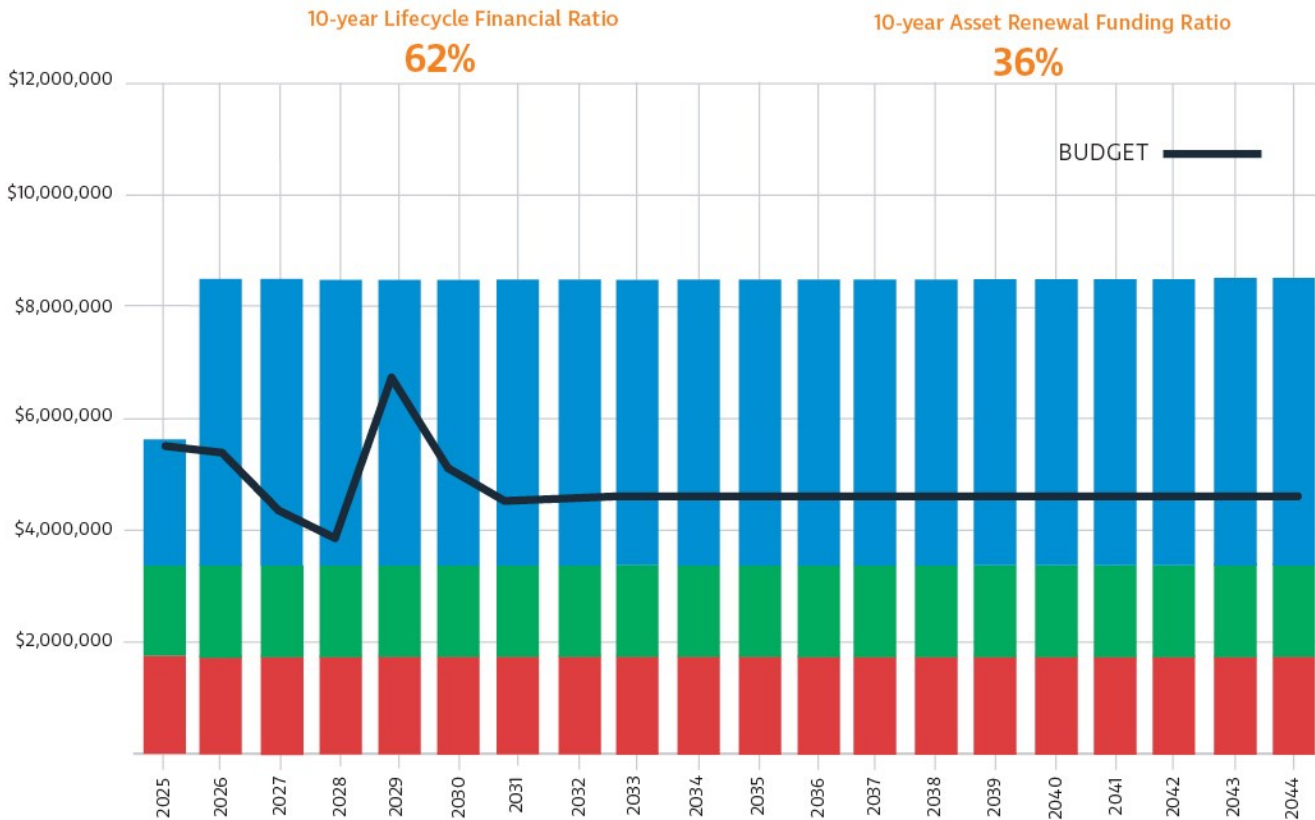


## 1.7 Financial Summary

This Asset Management Plan defines the asset management activities and associated funding requirements recommended for inclusion into the Long-Term Financial Plan to achieve our asset performance targets. The lifecycle costs necessary to operate, maintain and renew our assets as outlined within this Asset Management Plan is approximately \$8.10 million on average each year across the 10-year planning period. The associated 10-year annual average financial forecasts for renewal, maintenance and operation are presented below for Public Lighting and Electrical Infrastructure.

Lifecycle Category	10-Year Annual Average Forecast
Renewal	\$4.88 M
Maintenance	\$1.48 M
Operation Cost	\$1.74 M
<b>Lifecycle Cost</b>	<b>\$8.10 M</b>

Currently, the lifecycle budget allocation within the Long-Term Financial Plan is only \$4.99 million on average each year. This leaves a funding shortfall of \$3.11 million on average each year and means we currently only have 62% of the costs (Lifecycle Financial Ratio) to deliver the required activities to sustain current levels of service.



### LIFECYCLE SUMMARY

Annual Average first 10 years  
 Lifecycle Summary \$8,101,727  
 Planned Budget \$4,986,639  
 Shortfall -\$3,115,088



### MAINTENANCE

Annual Average first 10 years  
 Planned Budget \$1,478,327  
 Lifecycle Forecast \$1,478,327



### OPERATION

Annual Average first 10 years  
 Planned Budget \$1,747,000  
 Lifecycle Forecast \$1,747,000



### RENEWAL

Annual Average first 10 years  
 Planned Budget \$1,761,312  
 Lifecycle Forecast \$4,876,400





Noting that this Asset Management Plan has not forecast any additional operational and maintenance requirements, the identified lifecycle funding shortfall is associated with the revised asset renewal forecasting. The Public Lighting and Electrical Infrastructure network will require additional renewal funding across the 10-year planning period to maintain existing levels of service.

The Asset Renewal Funding Ratio indicates that over the next 10 years our current budgets within the Long-Term Financial Plan account for 36% of the forecast funding required for the optimal renewal of our Public Lighting and Electrical Infrastructure. Contributing factors for the gap between the forecast renewal costs and current budgets within the Long-Term Financial Plan include:

- Not achieving our Asset Renewal Funding Ratio targets over the past four financial years as a result of Covid-19 resourcing impacts and project delays associated with post-pandemic market saturation.
- Undertaking a comprehensive review of existing funding allocations and appropriately re-forecasting asset renewal requirements within this Asset Management Plan.
- Ensuring we accurately recognise asset replacement costs, utilising current unit rates that take into consideration increasing costs associated with inflation and industry escalations.

Only what is funded in the Long-Term Financial Plan and approved through the Annual Business Plan and Budget can be delivered. Should the Long-Term Financial Plan be unable to accommodate the revised asset renewal forecasts recommended within this Asset Management Plan, there will be associated service and risk impacts.

Continuing to leverage off external funding opportunities will allow us to maintain and enhance the quality of the service we provide, while reducing financial pressures through the efficiencies in an increased revenue. We will continue to work in partnership with both the State and Federal Governments to pursue these opportunities for both renewal and significant new and upgrade projects.



## 1.8 Potential Service and Risk Impacts

If the forecast activities outlined within this Asset Management Plan (operations, maintenance, renewal) are unable to be accommodated into the Long-Term Financial Plan, there will be potential service consequences for users. These service consequences include:

- Reduced levels of service for the Public Lighting and Electrical Infrastructure
- Increased service disruptions and public lighting outages
- Reduced customer satisfaction levels associated with the management of our existing assets
- Intergenerational inequity (burdening future generations)

These associated risk consequences include:

- Increased safety risks associated with assets becoming inoperative
- Increased reputational risks associated with services not aligning with community expectations
- Increased financial risks associated with additional maintenance requirements that cannot be accommodated within existing budgets
- Increased financial risks associated with higher renewal and/or rehabilitation treatments as asset renewals are not funded at the optimal point in time
- Increased economic risk associated with reduced business activity, events and tourism
- Intergenerational inequity (passing on costs and risk to future generations)

If the forecast activities outlined within this Asset Management Plan are unable to be accommodated into the Long-Term Financial Plan, we will endeavour to manage these risks within available funding by:

- Continuing to undertake regular asset condition and maintenance inspections
- Prioritising all asset renewal and maintenance activities with respect to available budget
- Revising our levels of service to establish an acceptable balance between cost, level of service and risk
- Developing a communication strategy to manage expectations and educate the community around affordable levels of service
- Continuing to seek out external funding opportunities
- Prioritisation of the delivery of key actions from the Improvement Plan.





## 1.9 Monitoring and Improvement Program

The next steps resulting from this Asset Management Plan to improve asset management practices are:

Improvement Plan Actions	
1	Comprehensive update of this Asset Management Plan following the completion of spatial data improvements, asset condition audit and asset revaluation.
2	Finalise a 4-year Resource Plan to identify key upgrade/new projects to deliver Council's Strategic Plan objectives. Once key projects are recognised within the Long Term Financial Plan, Asset Management Plans will be updated to ensure associated acquisition costs (upgrade/new) and ongoing operational and maintenance costs are appropriately recognised, in conjunction with any scheduling adjustments required for asset renewal programs.
3	Finalise the Public Lighting Strategy to identify key priority projects for inclusion within the Resource Plan. Asset Management Plans to be reviewed and updated where required, considering any impacts to planned asset renewal programs.
4	Continue to review asset renewal forecasts and requirements for existing EV charging stations as the City of Adelaide Electrical Vehicle Charging Infrastructure Roadmap is implemented.
5	Review and update operations and maintenance standards, to develop more structured and proactive maintenance regimes which provide an acceptable balance between cost, risk, and customer expectations. Include changes into future revisions of this Asset Management Plan and Long Term Financial Plan.
6	Continue to work in partnership with both the State and Federal Governments to pursue external funding opportunities for both renewal and significant upgrade/new Public Lighting and Electrical Infrastructure projects.
7	Continue to undertake regular condition audits and revaluation for all Public Lighting and Electrical Infrastructure assets, including regular review of asset useful lives.
8	Continue to review our technical standards and their application across the Public Lighting and Electrical Infrastructure with respect to climate resilience, circular economy, recycled materials, durability and performance, whole-of-life cost, amenity, and heritage requirements.
9	Continue to monitor forecast climate change impacts to ensure we remain resilient through proactively implementing appropriate mitigation and adaptation controls.
10	Improve the capture of carbon emission data for technical standards and project procurement to support lower carbon decision making.
11	Engage with the community and seek feedback regarding levels of customer satisfaction for CCTV Cameras and Electrical Vehicles Charging Station assets for the next revision of this Asset Management Plan.
12	Review of corporate performance measure targets for customer satisfaction, to assist with performance gap analysis.
13	Review and standardise asset hierarchies for all asset classes within Public Lighting and Electrical Infrastructure.
14	Review customer service requests codes to better align with Level of Service reporting and operational and maintenance sub-activities.
15	Further develop processes to ensure asset data is updated following the completion of contracted maintenance work and emergency asset replacement resulting from vandalism or knockdowns.



## 2.0 INTRODUCTION

### 2.1 Background

First shaped by the Kurna People of the Adelaide Plains, then by Colonel William Light, Adelaide is a dynamic, accessible and safe city, that offers an enviable quality of life. The physical layout of the city enhances the attributes that make Adelaide unique. From the Nationally Heritage Listed Park Lands that surround our city, to the compact layout that makes the city walkable and cyclable, to our unique neighbourhoods and precincts, all these factors place Adelaide on the path to being one of the most liveable cities in the world. Despite our small footprint, the City of Adelaide is home to over 26,000 residents, 12,000 businesses and accommodates over 300,000 visitors daily, contributing close to 18% of the State's economic value.

The City of Adelaide's Public Lighting and Electrical network is essential to the health, wellbeing and safety of our community. It supports pedestrians, cyclists and motorists to move into and around the City and Park Lands and enhances the utilisation and activation of the City. This asset portfolio is valued at approximately \$145.6 million and includes streetlights, CCTV Cameras, EV charging stations and switchboards.

Our Public Lighting assets consist of several different ownership and responsibility models. Some Public Lighting assets are owned and operated entirely by City of Adelaide, some are owned entirely by SAPN (CCS pay a contribution for the maintenance and operation of these Public Lighting assets) and some are a hybrid of CoA and SAPN ownership where Council own the luminaire (light fitting) and SAPN own the supporting structure (pole). Under a hybrid arrangement Council contribute to the maintenance and operation by way of a tariff.

With projected City and metropolitan growth, a changing climate, and advancements in technology, it is anticipated that higher demand will be placed on our existing assets and there will be increasing requirements for new and upgraded infrastructure.

With Council's strategic objectives to create a beautiful and diverse City that is welcoming, inclusive, and accessible to all, it is critical to ensure that our public lighting and electrical infrastructure network continues to be appropriately managed, ensuring we provide appropriate services and benefits for both current and future generations.

Work is currently underway to significantly improve the spatial data, asset condition information and asset attribute information utilised within this Public Lighting and Electrical Infrastructure Asset Management Plan. These activities align with good asset management practices and will provide more granular information to enable robust analysis to inform future decision making. The outcome of this work, which is due for completion by June 2025, will enable a more mature Public Lighting and Electrical Asset Management Plan with a high degree of confidence for the future requirements of the asset class. Therefore, due to the current maturity level of the asset data, this Public Lighting and Electrical Asset Management Plan will be considered an interim document, which will be updated following the completion of the spatial data improvements, condition audit, and subsequent modelling and analysis.

This interim Public Lighting & Electrical Infrastructure Asset Management Plan communicates the requirements for the sustainable delivery of services through management of assets, compliance with regulatory requirements, and required funding to provide the appropriate levels of service over the planning period. The infrastructure assets covered by this Asset Management Plan, including their quantities and replacement costs are shown in Table 2.1 below.



**Table 2.1: Assets covered by the Public Lighting and Electrical Infrastructure Asset Management Plan**

Asset Category	Quantity/Dimension	Replacement Value
Public Lighting and Electrical	7,829 street lighting columns	\$138.3 million
	9,986 street lights / luminaires	
	993 switchboards	
CCTV Network	153 cameras	\$6.2 million
EV Charging Stations	41 charging stations	\$1.08 million
Total		\$145.6 million

This Asset Management Plan is to be read in conjunction with the Asset Management Policy, Strategic Asset Management Plan and the following key Corporate planning documents:

- City of Adelaide Strategic Plan (2024-2028)
- Active City Strategy (2013-2023)
- Adelaide Park Lands Management Strategy (2014-2025)
- Carbon Neutral Strategy (2015-2025)
- Climate Change Risk Adaptation Action Plan (2021-2026)
- Community Land Management Plans
- Disability Access and Inclusion Plan (2019-2022)
- Heritage Strategy and Action Plan (2021-2036)
- Park Land and Precinct Master Plans
- Public Art Action Plan (2019-2022)
- Public Health and Wellbeing Plan (2020-2025)
- Smart Move Transport and Movement Strategy (2012-2022)
- The 30-Year Plan for Greater Adelaide (2017) - State Government
- Integrated Transport and Land Use Plan for Greater Adelaide - State Government
- South Australian Walking Strategy (2022-2032) – State Government
- South Australia’s Road Safety Strategy (to 2031) – State Government

As existing planning documents are updated and new planning documents are approved by Council, Asset Management Plans will be reviewed and updated as required.

Infrastructure projects will reference the Adelaide Design Manual for transformational projects supported by upgrade/new funding allocated with the Business Plan and Budget and Long-Term Financial Plan.

## 2.2 Goals and Objectives of Asset Ownership

Our goal for managing infrastructure assets is to meet the defined level of service (as amended from time to time) in the most cost effective manner for present and future consumers.

The key elements of infrastructure asset management are:

- Providing a defined level of service and monitoring performance,
- Managing the impact of growth through demand management and infrastructure investment,
- Taking a lifecycle approach to developing cost-effective management strategies for the long-term that meet the defined level of service,
- Identifying, assessing, and appropriately controlling risks, and
- Linking to a Long-Term Financial Plan which identifies required, affordable forecast costs and how it will be allocated.



Key elements of the planning framework are:

- Levels of service – specifies the services and levels of service to be provided,
- Risk management,
- Future demand – how this will impact on future service delivery and how this is to be met,
- Lifecycle management – how to manage its existing and future assets to provide defined levels of service,
- Financial summary – what funds are required to provide the defined services,
- Asset management practices – how we manage provision of the services,
- Monitoring – how the plan will be monitored to ensure objectives are met,
- Asset management improvement plan – how we increase asset management maturity.

Other references to the benefits, fundamentals principles and objectives of asset management are:

- International Infrastructure Management Manual 2015 <sup>1</sup>
- ISO 550001

---

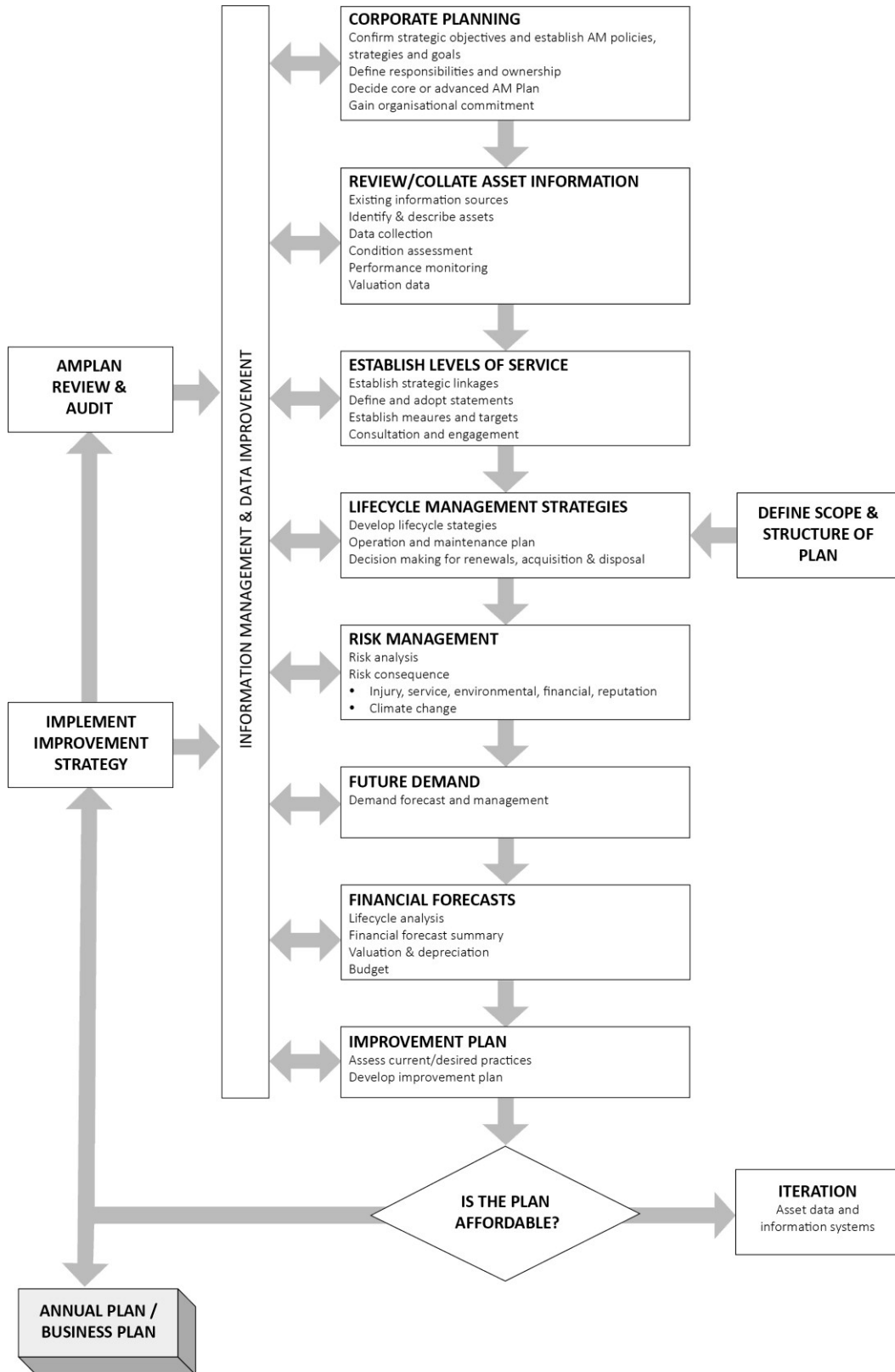
<sup>1</sup> ISO 55000 Overview, principles and terminology



A road map for preparing an Asset Management Plan is shown below:

**Figure 2.2: Road Map for preparing an Asset Management Plan**

Source: IPWEA, 2006, IIMM, Fig 1.5.1, p 1.11





## 2.3 Key Stakeholders & Organisational Responsibilities

Key stakeholders in the preparation and implementation of this Asset Management Plan are shown in Table 2.3.

**Table 2.3: Key Stakeholders in the Asset Management Plan**

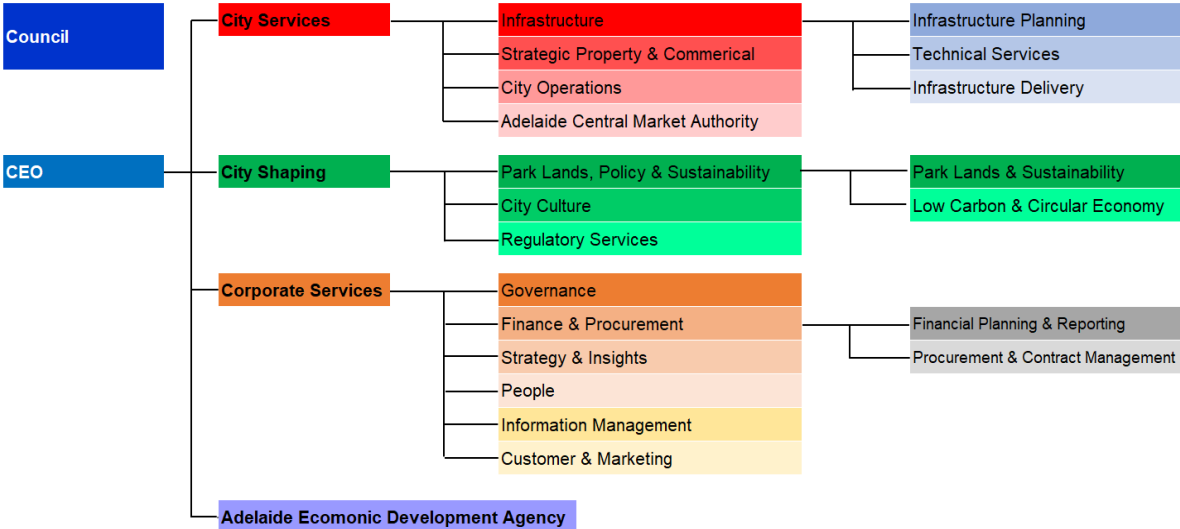
Key Stakeholder	Role in Asset Management Plan
Residents, Ratepayers & Businesses	Provide feedback on current and desired levels of service, which is considered in the development of Asset Management Plans.
Workers, Visitors, Tourists and Students	
Capital City Committee (CCC)	Intergovernmental body established under the City of Adelaide Act (1998) which initiates new projects to enhance and promote the development of the City of Adelaide as the capital city of the state.
Lord Mayor & Elected Members	<p>Represent and advocate for the needs of the community and set high level direction through the development of asset management principles in the Strategic Plan.</p> <p>Approve the Asset Management Plan and Long-Term Financial Plan, to ensure the organisation maintains financial sustainability over the short, medium, and long terms, with consideration of community needs/expectations and corporate risk management requirements.</p>
Chief Executive Officer & Executive Leadership Team	<p>Responsible for the allocation of resources and development of sound asset management practice across the organisation as well as ensuring that all asset management activities are consistent with the objectives of Council's Strategic Plan, the Business Plan and Budget process and the Long-Term Financial Plan.</p> <p>Responsible for ensuring the financial projections in the adopted Asset Management Plans are reflected in the Long-Term Financial Planning and include sustainable maintenance, operations, renewal, and upgrade costs of current and future assets.</p>
Associate Director Infrastructure	Responsible for providing leadership and direction for Council's Asset Management Framework and Project Delivery.
Infrastructure Planning	Responsible for the lifecycle management of Council's Infrastructure Assets and the development of Asset Management Plans, ensuring alignment with the Strategic Management Framework and principles and objectives outlined in the Strategic Plan and other relevant corporate planning documents.
Park Lands & Sustainability	<p>Responsible for developing the Adelaide Park Lands Management Strategy, Park Lands and Square Master Plans and initiating priority Park Lands &amp; Open Space upgrade/new project initiatives.</p> <p>Responsible for facilitating the identification of climate change risks and potential impacts to infrastructure assets.</p>



Key Stakeholder	Role in Asset Management Plan
Low Carbon & Circular Economy	Responsible for facilitating the identification of opportunities to improve circular economy outcomes within infrastructure standards and specifications.
Traffic & Transport	Responsible for developing the Integrated Transport Strategy, Corridor Planning Studies and initiating priority Transportation upgrade/new project initiatives as well as providing technical traffic advice for capital works projects and operational issues.
Strategy & Insights	Responsible for the Strategic Management Framework, including the development of the Strategic Plan in consultation with the Executive Leadership Team, Elected Members, and key strategic stakeholders.
Technical Services	Responsible for technical design documentation to facilitate construction of infrastructure projects, review, and update infrastructure technical standards to ensure they are fit-for-purpose as well as the provision of general engineering and technical advice.
Infrastructure Delivery	Responsible for delivering Capital Works Projects identified in the Asset Management Plan and Annual Business Plan and Budget.
Financial Planning & Reporting	Responsible for the development and currency of the Asset Accounting Policy, Fixed Asset Guideline, as well as the preparation of asset sustainability and financial reports, which incorporate depreciation and asset revaluations in compliance with Australian accounting standards.
Procurement & Contract Management	Responsible for ensuring appropriate procedures are in place to enable efficient and effective procurement and contract management that demonstrates value for money and ensure public money is appropriately spent in accordance with the Local Government Act.
City Operations	Responsible for delivering day-to-day maintenance and operational activities, ensuring works are prioritised, planned and delivered consistently with operational and maintenance plans.
Regulatory Services	Responsible for issuing permits with conditions to enable external parties to undertake works on Council Infrastructure as well as enforcing rectification for works that are not compliant with City of Adelaide construction standards.
Department of Infrastructure and Transport (DIT)	Collaborative partner for major projects.
South Australian Power Networks	South Australian Power Networks own and maintain a network of street lighting within the City of Adelaide area and are the energy provider for City of Adelaide's own public lighting network.
South Australian Police	Collaborative partner for the monitoring and operational aspects of the CCTV network. SAPOL have access to CCTV surveillance footage, to enable improved city safety outcomes.

Our organisational structure for service delivery associated with infrastructure assets is shown in Figure 2.3.

**Figure 2.3: Organisational Structure**





### 3.0 LEVELS OF SERVICE

#### 3.1 Customer Research and Expectations

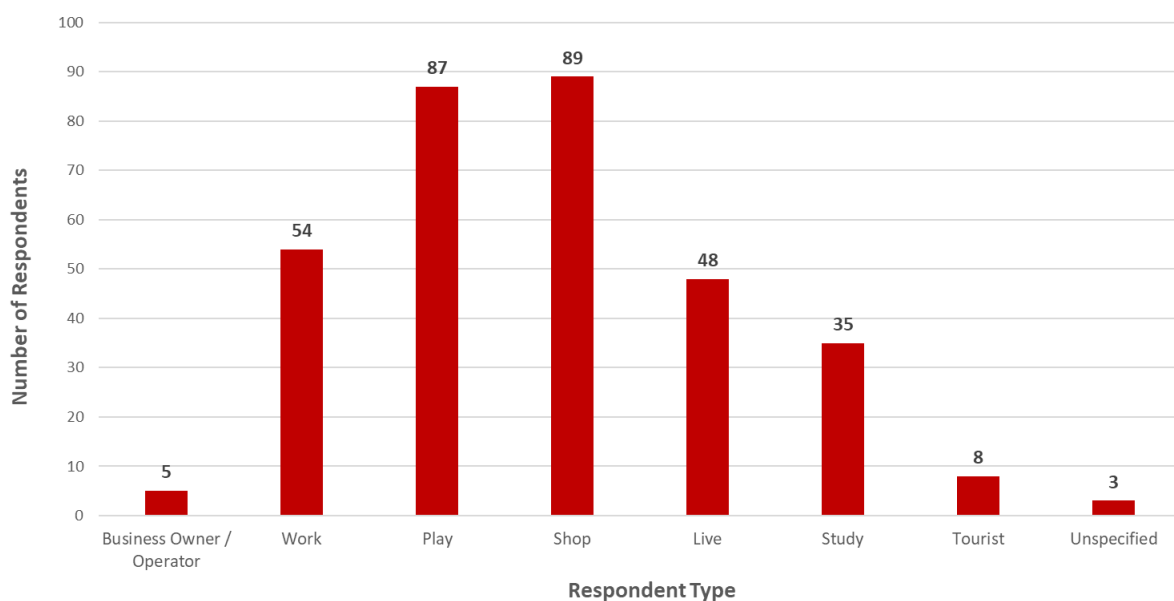
In November 2021, the City of Adelaide undertook an engagement process with City residents and visitors to better understand and measure levels of customer satisfaction for users who utilise the services provided by our public lighting and electrical infrastructure. The engagement was advertised on signage in City Streets as well as through the City of Adelaide’s social media platforms.

The insights from the Survey are intended to be used to identify where current levels of service are not meeting the community’s expectation. This will enable recommendations to be made to Council regarding future resourcing requirements for specific services.

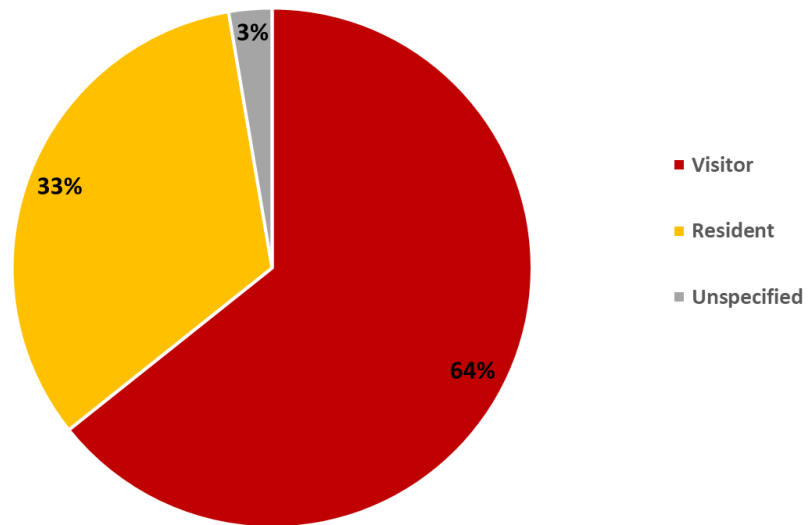
The engagement process was primarily undertaken through questionnaire surveys (113 total respondents), where information was collected online using the YourSay platform (61 respondents), as well as through on street intercepts at various locations across the City (52 respondents). Additional information and feedback relating to CoA’s infrastructure assets was also collected through the 2021 Resident Survey (318 comments) and engagement with the Disability Access and Inclusion Panel (44 comments).

The demographic distribution of respondents who provided feedback is presented across Figures 3.1-1 to 3.1-3. There were significantly more survey responses received from City visitors compared to residents and an even balance across genders.

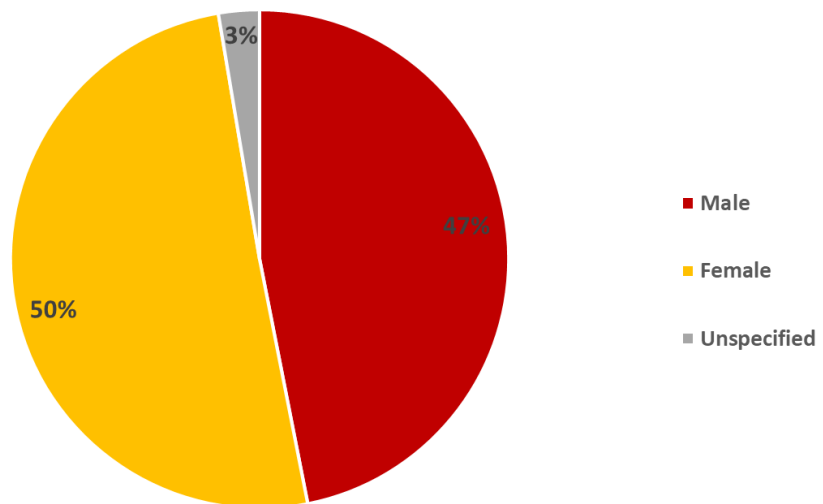
**Figure 3.1-1: Respondent distribution**



**Figure 3.1-2: Respondent Distribution (Residents v Visitors)**



**Figure 3.1-3: Respondent Distribution (Gender)**



To ensure that data was collected to enable a clear line of sight for decision making purposes, the questionnaire was structured to differentiate responses relating to the City's streets and the Park Lands. The consultation process collected feedback on Public Lighting, however it did not collect feedback on the CCTV Network or EV Charging Stations, we will collect this information on these in future consultation works.

For each performance measure question, a customer satisfaction indicator was calculated which represents the percentage of respondents who were satisfied with the service (neutral responses were omitted from the calculation). These figures can then be compared against CoA's organisation scorecard target of 70% satisfaction to identify where our services are not being delivered in line with community expectations.

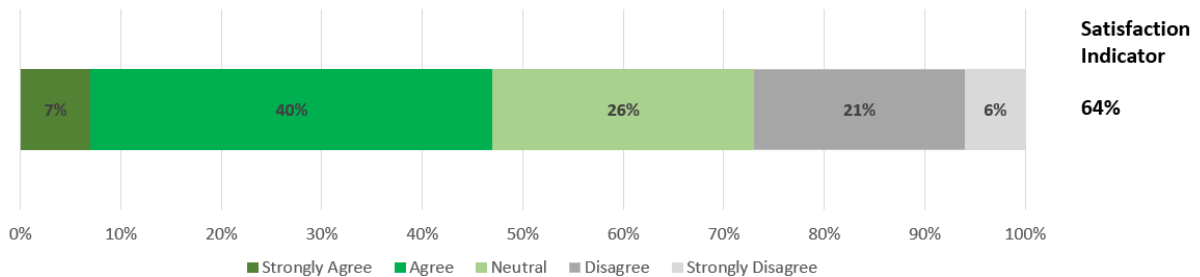
The results for City Streets and Park Lands Public Lighting and Electrical assets are presented and discussed below.



## City Streets

Respondents were fairly satisfied with the overall performance of public lighting located on City Streets, where the performance measure had a satisfaction indicator of 64%, which is just below CoA's 70% target, as shown in Figure 3.1-4 below.

**Figure 3.1-4: City Streets are adequately lit**



Feedback identified that lighting levels in some City Street locations were considered insufficient. After assessing the feedback included within the consultation responses, it was identified that the majority of the feedback related to poor lighting levels on City Streets where South Australian Power Networks infrastructure lighting was installed.

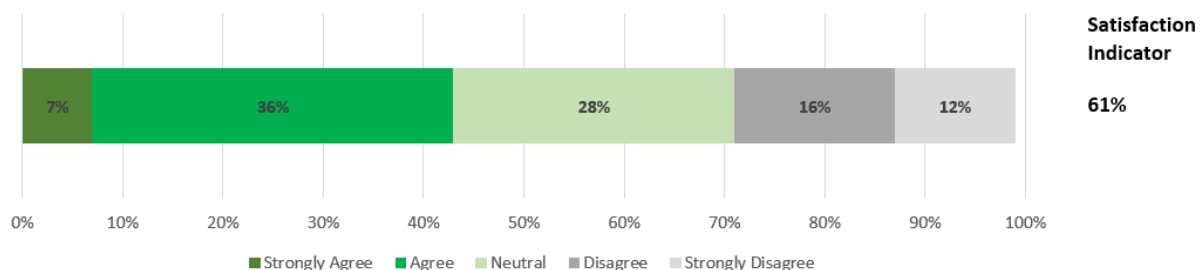
This has identified that key service deficiencies raised through the engagement process are generally associated with the requirement for new and upgraded infrastructure to improve public lighting levels, more so than the maintenance and renewal of our existing assets.

It is anticipated that the completion of the public lighting strategy (currently under development) and the subsequent initiation, funding and delivery of priority new and upgrade public lighting projects will incrementally bridge the gap between customer expectations and service provision over time.

## Park Lands

Respondents were fairly satisfied with the overall performance of our public lighting located within the Park Lands, where the performance measure had a satisfaction indicator of 61%, below CoA's 70% target, as shown in Figure 3.1-5 below.

**Figure 3.1-5: Parks Lands are adequately lit**



Feedback identified that lighting levels in some Park Lands locations were considered insufficient. After assessing the feedback included within the consultation responses, it was identified that majority of the feedback was associated with locations where no public lighting currently exists.

Similarly to City Streets, the key service deficiencies raised for the Park Lands was associated with the requirement for the creation of additional/new public lighting, more-so than the maintenance and renewal of our existing assets. Again, it is anticipated that the completion of a Public Lighting Strategy (currently under development) and the subsequent initiation, funding and delivery of new and upgrade Public Lighting projects will incrementally bridge the gap between customer expectations and service provision over time.

**Summary**

For this Asset Management Plan, feedback was not sought for CCTV or Electric Vehicle charging stations. Ensuring this feedback is collected in the future has been recognised as an action within this Asset Management Plan’s Improvement Plan (Section 8.2), to enable customer satisfaction levels to be measured for these assets.

Table 3.1 below provides a high-level summary of the community’s feedback for our public lighting assets.

**Table 3.1: Consultation Summary Table**

Category	Average Score	Not measured	Very Poor (<40%)	Poor (40-54%)	Average (55-69%)	Good (70-85%)	Excellent (>85%)
Public Lighting	62.5%				●		
CCTV	-	●					
EV Charging Stations	-	●					

The overall feedback confirmed appropriate levels of customer satisfaction for the maintenance and renewal of our existing Public Lighting and Electrical infrastructure assets. However, engagement did identify some locations where the community believed public lighting provisions could be improved in both the City and Park Lands.



### 3.2 Strategic Planning

Under the Local Government Act (SA) 1999, we are legislatively required to establish a suite of Strategic Management Plans, which guide Council’s future planning, asset management and financial sustainability. An overview of these strategic management plans are shown below in Table 3.2-1:

**Table 3.2-1: Strategic Management Documents**

<b>Strategic Plan</b> <i>Community</i>	Long term with a four year delivery focus. <i>Planning for the vision and aspirations of the Adelaide Capital City.</i>
<b>Long-Term Financial Plan</b> <i>Financial</i>	Ten year Plan, revised annually to ensure a ten year view is maintained. <i>Planning for the long-term financial sustainability of the City of Adelaide.</i>
<b>Asset Management Plans</b> <i>Infrastructure</i>	Suite of ten year Plans. <i>Planning for the sustainable renewal and maintenance of Council assets.</i>
<b>City Plan</b> <i>Development / Built Form</i>	Ten year Spatial Plan. <i>Planning for the future land uses and built form of the Adelaide Capital City.</i>

Through the City of Adelaide Draft Strategic Plan 2024-2028, Council’s vision is:

***Our Adelaide. Bold. Aspirational. Innovative.***

Achieving our vision for the future will be guided by our long term aspirations:

- Our Community:** Vibrant, connected and inclusive
- Our Environment:** Resilient, protected and sustainable
- Our Economy:** Growing, innovative and responsive
- Our Places:** Interesting, purposeful and safe
- Our Corporation:** High performing, customer-centric and bold

As Adelaide grows, we will need to consider economic vitality, social connectivity and wellbeing, distinctive precincts, environmental and financial sustainability, asset management and service delivery. To ensure we maintain our liveability and to support growth, these principles will underpin everything we do:

- Exceptional Amenity - Be bold and courageous in our pursuit of excellence for our city.
- Quality Housing - Strive for liveability and affordability to attract and retain residents.
- Community Connection - Strengthen connection, accessibility, diversity and inclusivity by putting people first.
- Unique Experiences - Create interesting experiences for our residents, workers and visitors.
- Climate Resilience - Embed climate resilience in all that we do.
- Economic Growth - Encourage innovation, investment and development in current and emerging sectors.
- Budget Repair - Provide quality services and ensure long-term financial sustainability.

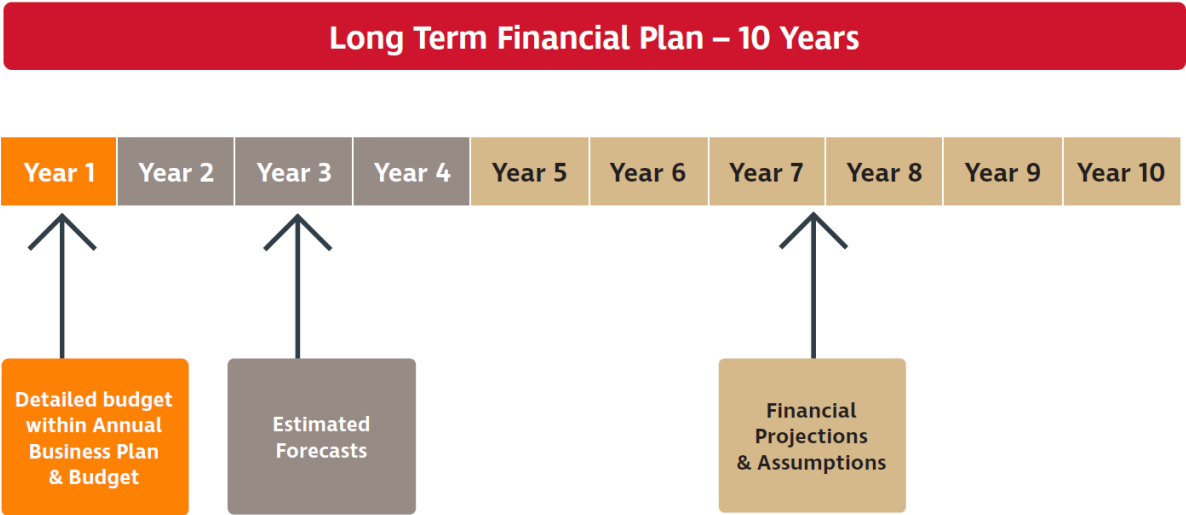
The Strategic Plan is supported by a suite of long and short-term strategies and action plans as well as a Resource Plan. The Resource Plan will provide a 4-year view of the projects, resources, and budgets required to deliver our Strategic Plan objectives. It informs the Long-Term Financial Plan (as shown in Figure 3.2) and acts as the key link between the Strategic Plan and Annual Business Plan & Budget, providing transparency between our vision and the key projects we deliver.

Integrated Delivery Planning ensures that prudent and efficient decisions are made, with line-of-sight between Council’s Strategic Plan objectives and the major infrastructure projects we deliver. While this Asset Management Plan does not identify financial forecasts associated with new and upgrade projects, it does ensure required asset renewals are aligned (where practical) with key new and upgrade projects specified within the Resource Plan. Infrastructure projects will reference the Adelaide Design Manual for

transformational projects supported by upgrade/new funding allocated with the Resource Plan and Long-Term Financial Plan.

Each year our annual business plan and budget formalises funding allocations to continue providing services and progress new projects. It enables existing projects to move from one delivery stage to the next (e.g. progress concept design to detailed design and detailed design to construction) as well as consider emerging risks and opportunities that may result from Council decisions, community requests or other external factors.

Figure 3.2: Long-Term Financial Plan



The relevant aspirations and objectives of the City of Adelaide 2024-2028 Strategic Plan and how they are considered within this Asset Management Plan are summarised in Table 3.2-2.



**Table 3.2-2: Strategic aspirations, objectives and outcomes and how these are considered in this Plan**

Aspirations	Objectives	Outcomes	Asset Management Alignment
Our Communities <i>Vibrant, connected and inclusive</i>	Support our communities thrive  Create fun, lively and interesting experiences  Celebrate and honour community and cultures	Drive affordable, safe and quality housing outcomes that attract and retain residents in our city  An interesting and engaging place to live, learn and visit  An inclusive, equitable and welcoming community where people feel a sense of belonging	<ul style="list-style-type: none"> <li>• Create welcoming civic infrastructure that enables City growth and fosters community connections through the adoption of universal and sustainable design principles</li> <li>• Create enabling infrastructure to support world class events, festivals and activation</li> <li>• Support the development of new cultural and civic infrastructure</li> <li>• Deliver key infrastructure projects and programs outlined within the Disability Access and Inclusion Plan</li> <li>• Deliver asset renewal and asset maintenance programs to ensure our assets are safe for people of all ages and abilities</li> </ul>
Our Environment <i>Resilient, protected and sustainable</i>	Protect, enhance, and activate our Park Lands and open space  Be climate conscious and resilient  Prioritise sustainability in our decisions for the future	Lead as a Low Carbon Emissions City  A sustainable city where climate resilience is embedded in all that we do  The status, attributes and character of our green spaces and the Park Lands are protected and strengthened	<ul style="list-style-type: none"> <li>• Increase the use of recycled or sustainable materials</li> <li>• Implement sustainable, renewable and green systems, infrastructure, practices and materials in our projects and services</li> <li>• Adapt to climate change and enhancing our climate resilience through upgrading our existing assets and creating new assets</li> <li>• Ensure all asset investment (design, construct and maintenance) considers and embeds appropriate climate resilience measures</li> <li>• Make public electric vehicle charging infrastructure available for all users, including micro-mobility, catalysing the uptake of electric vehicles in Adelaide and improving Council and community performance on transport emissions</li> <li>• Enhance the environmental value, productivity, quality and biodiversity of the Park Lands, squares, open space and streetscapes</li> </ul>
Our Economy <i>Growing, innovative and responsive</i>	Continue to grow our economy in alignment with the Community  Support existing businesses to be agile and responsive to change  Create strong skilled workforces	Adelaide’s unique experiences and opportunities attract visitors to our city  Achieve a critical mass of jobs and investment and attract and retain businesses by growing a dynamic, holistic economy  Council is driving development opportunities for our community via diverse commercial activities	<ul style="list-style-type: none"> <li>• Deliver infrastructure upgrade projects to attract increased visitation into the City and promote business development and economic growth</li> <li>• Explore project partnership opportunities with State Government, developers and other third-parties</li> </ul>
Our Places <i>Interesting, purposeful and safe</i>	Manage assets to meet the needs of our community  Encourage bold, interesting and purposeful development  Facilitate and activate our places in a safe and accessible way for our community	Community assets are adaptable and responsibly maintained  Encourage bold, interesting and purposeful development that supports the changing needs of our community and city  Create safe, inclusive and healthy places for our community	<ul style="list-style-type: none"> <li>• Deliver asset renewal and asset maintenance programs to ensure our assets are safe for people of all ages and abilities</li> <li>• Ongoing review of asset management strategies and technical standards to optimise whole-of-life costs</li> <li>• Continue to undertake regular condition audits and revaluation for all our assets within the nominated 4-year cycles, including regular review of asset useful lives</li> <li>• Deliver quality street and laneway upgrades, main streets, precincts and neighbourhood revitalisation and improvements that make Adelaide well-designed, safe and unique</li> <li>• Support the creation of multi-use green spaces such as open space, community gardens and pocket parks that enable shared use and community connection</li> <li>• Deliver Park Land and Streetscape improvements to cater for emerging community needs</li> <li>• Improve accessibility and connectivity for pedestrians, cyclists, and public transport users through delivering key projects from the integrated transport strategy (under development)</li> <li>• Preserve and promote heritage assets</li> <li>• Maintain and improve disability access and inclusion</li> </ul>

### 3.3 Legislative Requirements

There are many legislative requirements relating to the management of infrastructure assets including Australian Legislation, State Legislation and State Regulations. Legislative requirements relevant to the Public Lighting and Electrical Asset Management Plan are outlined in Table 3.3.

**Table 3.3: Legislative Requirements**

Legislation	Requirement
Aboriginal Heritage Act 1988	An Act to provide for the protection and preservation of the Aboriginal heritage
Adelaide Park Lands Act 2005	An Act and Framework that promotes the special status, attributes, and character of the Adelaide Park Lands; to provide for the protection of those Park Lands and their management as a world class asset to be preserved as an urban park for the benefit of present and future generations
Australian Accounting Standards	Standards that set out the financial reporting standards relating to the revaluation and depreciation of assets
Australian Standard AS/NZS 1158 Series	Provides minimum standards for Public Lighting and specifies performance and design requirements
Australian Standard AS/NZS 3000	This standard sets out the requirements for the design, construction and verification of electrical installations
Australian Road Rules 1999	The Australian Road Rules have been made into regulations under the Road Traffic Act (South Australia) and came into operation throughout Australia on 1 December 1999
City of Adelaide Act 1998	An Act to establish mechanisms to enhance the role of the city of Adelaide as the capital city of South Australia; to make special provision in relation to the local governance of the city of Adelaide; and for other purposes
Civil Liability Act 1936	An Act to outline liability of road authorities under Section 42
Code of Technical Requirements (Part 2)	Outlines the design and construction parameters to which traffic management devices must comply
Development Act 1993	An Act to provide for planning and regulate development in the state; to regulate the use of management of land and building; and for other purposes

Disability Discrimination Act 1992	An Act to provide protection for everyone in Australia against discrimination based on disability. It encourages everyone to be involved in implementing the Act and to share in the overall benefits to the community and the economy that flow from participation by the widest range of people
Environmental Protection Act 1993	An Act to provide for the protection of the environment: to establish the Environmental Protection Authority and define functions and powers and for other purposes
Highways Act 1926	An Act to provide for the appointment of a Commissioner of Highways and to make further and better provisions for the construction and maintenance of roads and works and for other purposes
Linear Parks Act 2006	An Act to provide the protection of the River Torrens Linear Park, as world-class assets to be preserved as public parks for the benefit of present and future generations
Local Government Act 1999	An Act to set out the role, purpose, responsibilities, and powers of local governments including the preparation of a Long-Term Financial Plan supported by asset management plans for sustainable service delivery
Roads (Opening and Closing) Act 1991	An Act to provide for the opening and closing of roads and allows for formalisation of roadway status
Road Traffic Act 1961	An Act to prescribe the duties of road users; to provide for nationally consistent road rules; to provide for vehicle standards, mass, and loading requirements; to provide for the installation, use, and maintenance of traffic control devices; to provide for the closing of roads for traffic management and other purposes
State Records Act 1997	An Act to ensure Local Government's record and store all relevant information as set out by the State Government of South Australia
Work Health and Safety Act 2012	Provides minimum standards for health and safety of individuals performing works

### 3.4 Customer Levels of Service

Customer Levels of Service measure how the community receives a service and whether the organisation is providing community value. Levels of service are monitored and adjusted from the public consultation process, customer satisfaction surveys and customer service centre feedback.

The Customer Levels of Service are considered in terms of:

**Quality**            How good is the service ... what is the condition or quality of the service?

**Function**            Is it suitable for its intended purpose ... is it the right service?

**Capacity**            Is the service over or under used ... do we need more or less of these assets?

In Tables 3.4 under each of the service measures types (Quality, Function, Capacity) there is a summary of the performance measure being used, the current performance, and the expected performance based on the current budget allocation.

These are measures of fact related to the service delivery outcome (e.g. number of occasions when service is not available or proportion of replacement value by condition %'s) to provide a balance in comparison to the customer perception that may be more subjective.



**Table 3.4: Customer Level of Service Measures**

Type of Measure	Level of Service	Performance Measure	Current Performance	Expected Trend Based on Current Budget
<b>Quality</b>	Condition – Public Lighting and Electrical assets are operational and are in a condition appropriate for use	Customer service requests relating to Public Lighting and Electrical faults and maintenance issue	2022 – 111 requests Past 4 years average - 89/year	Expected to increase as Public Lighting and Electrical assets deteriorate
		Customer satisfaction survey results relating to public lighting levels	City Streets – 64% Park Lands – 61% Average – 62.5%	Expected to decrease as Public Lighting and Electrical assets deteriorate
	Condition – CCTV Network is operational and are in a condition appropriate for use	SAPOL and customer service requests relating to CCTV Network faults, operation, and cleaning	2022 – 38 requests Past 4 years average - 25/year	Expected to increase as CCTV cameras deteriorate
	Condition - Electric Vehicle Charging Stations are operational and are in a condition appropriate for use	Customer service requests relating to Electric Vehicle Charging Stations	2022 – not currently measured	Expected to increase as EV charging station assets deteriorate
	<b>Confidence levels</b>			<b>Medium</b>
<b>Function</b>	Fit for Purpose – Public Lighting levels provide adequate visibility for safety and efficient movement for all modes of transport	Customer service requests for increased Public Lighting levels for safety	2022 – 12 requests Past 4 years average – 18/year	Expected to increase as Public Lighting and Electrical assets deteriorate
	Fit for Purpose – CCTV cameras are located in suitable locations which enable public safety surveillance and monitoring by SAPOL	SAPOL and customer service requests to requests to relocate or remove CCTV Network equipment	2022 – 2 requests Past 4 years average – 0.5/year	Expected to increase as the population and usage of the city increases
	<b>Confidence levels</b>			<b>Medium</b>
<b>Capacity</b>	Capacity – Public lighting infrastructure is present in locations to meet user demands	Customer service requests relating to new public lighting	2022 – 4 requests Previous 4 years average – 6/year	Subject to Council adoption of upgrade/new projects through Business Plan and Budget
	Capacity – There are an adequate number of CCTV cameras located across the city to enable surveillance and monitoring for public safety	Customer service requests relating to new CCTV cameras	2022 – 0 requests Previous 4 years average – 2/year	Subject to Council adoption of upgrade/new projects through Business Plan and Budget
	Capacity – There are an adequate number of Electric Vehicle Charging Stations to meet user needs	Customer service requests relating to new EV charging stations	2022 – not currently measured	To be reviewed as the City of Adelaide Electrical Vehicle Charging Infrastructure Roadmap is implemented.
	<b>Confidence levels</b>			<b>Medium</b>

### 3.5 Technical Levels of Service

To deliver the customer values, and impact the achieved Customer Levels of Service, are operational or technical measures of performance. These technical measures relate to the activities and allocation of resources to best achieve the desired customer outcomes and demonstrate effective performance.

Technical service measures are linked to the activities and annual budgets covering:

- **Acquisition** – the activities to provide a higher level of service (e.g. installing additional street lighting, replacing an electrical switchboard with a larger size) or a new service that did not exist previously (e.g. installing new lighting in an unlit park)
- **Operation** – the regular activities to provide services (e.g. energy/power costs)
- **Maintenance** – the activities necessary to retain an asset as near as practicable to an appropriate service condition. Maintenance activities enable an asset to provide service for its planned life (e.g. minor cabling or switchboard repairs)
- **Renewal** – the activities that return the service capability of an asset up to that which it had originally provided (e.g. renewal of existing Public Lighting poles and luminaires, electrical conduit replacement)
- **Disposal** – the activities to remove and/or dispose of an asset that may be considered as underperforming, underutilised or obsolete

Service and asset managers plan, implement and control technical service levels to influence the service outcomes.<sup>2</sup>

Table 3.5 shows the activities expected to be provided under the current 10 year Planned Budget allocation, and the Forecast activity requirements being recommended in this Asset Management Plan.

It is important to monitor the service levels regularly as circumstances can and do change. Current performance is based on existing resource provision and work efficiencies. It is acknowledged changing circumstances such as technology and customer priorities will change over time.

---

<sup>2</sup> IPWEA, 2015, IIMM, p 2|28.

**Table 3.5: Technical Levels of Service**

Lifecycle Category	Lifecycle Activity	Purpose of Activity	Activity Measure	Current Performance	Recommended Performance
Acquisition (upgrade/new)	Upgrade / New Projects	To upgrade and further develop the public lighting and electrical infrastructure network to ensure it is safe, fit-for-purpose and meets the needs of the community	Delivery of key upgrade/new projects	Upgrade/new projects aligned to Strategic Plan objectives are initiated through the Business Plan and Budget process on an annual basis, where projects are evaluated and prioritised based on strategic alignment and financial capacity	Upgrade/new projects aligned to Strategic Plan objectives are informed by City Plan, with financial requirements accommodated into the Long-Term Financial Plan. Initiatives are confirmed to proceed annually through the Business Plan and budget process
			<b>Budget:</b>	As adopted annually in BP&B	To be developed
Operation	Condition Audits	To collect asset condition data to inform capital renewal planning and revaluation	Full condition audit of Public Lighting and Electrical Infrastructure network	Every 4 years	Every 4 years
	Power Supply	Utility costs associated with providing power to operate public lighting and electrical infrastructure	Ongoing power supply to operate public lighting and electrical infrastructure	Ongoing power supply to operate public lighting and electrical infrastructure	Ongoing power supply to operate public lighting and electrical infrastructure
Maintenance			<b>Budget</b>	Condition Audits: \$500,000/4 years Power Supply: \$1,622,000/Year	Condition Audits: \$500,000/4 years Power Supply: \$1,622,000/Year
	Maintenance Audits	To ensure Public Lighting and Electrical Infrastructure defects are proactively identified prior to faults occurring	Frequency of maintenance audits	Each site inspected every 6 months	To be reviewed with planned updates to operations and maintenance standards
	Night Audits	To ensure Public Lighting outages and faults are proactively identified	Frequency of night audits	Night audits of the network are undertaken 5 times a year.	To be reviewed with planned updates to operations and maintenance standards
	Maintenance Activities	To ensure Public Lighting and Electrical assets are maintained in a serviceable condition free of hazards to enable reliable and ongoing service provision	Completion of planned and reactive maintenance	Priority 1 – make safe within 1 working day Priority 2 – rectify within 2 working days Priority 3 – rectify within 5 working days	To be reviewed with planned updates to operations and maintenance standards
Renewal			<b>Budget</b>	\$1,478,327	To be reviewed with planned updates to operations and maintenance standards
	Renewal Projects	To ensure assets are renewed, providing service in line with community expectations at lowest lifecycle costs	% of assets in condition 4 & 5	Condition 4 - 10 % Condition 5 - 1 %	Condition 4 – less than 5% Condition 5 - 0 %
			Asset renewal funding ratio	90% (existing Asset Management Plan)	100% (assuming budget is adopted)
		<b>Budget</b>	\$2,233,000	\$4,743,295(10 Year Average)	
Disposal	Disposals Projects	To ensure that assets that may be underperforming, underutilised or obsolete are removed from service	Disposal of assets	Major assets are recommended for disposal through Council decision, with financial requirements identified and incorporated through the Business Plan and Budget	Major assets are recommended for disposal through Council decision, with financial requirements identified and incorporated through the Business Plan and Budget
			<b>Budget</b>	As adopted annually in BP&B	As adopted annually in BP&B



## **4.0 FUTURE DEMAND**

### **4.1 Demand Drivers**

The drivers affecting demand on assets include population change, regulations, changes in demographics, seasonal factors, vehicle ownership rates, consumer preferences and expectations, technological changes, economic factors, and environmental impacts.

### **4.2 Demand Forecasts**

The present position and projections for demand drivers that may impact future service delivery and use of assets have been identified and documented.

### **4.3 Demand Impact and Demand Management Plan**

The impact of demand drivers that may affect future service delivery and use of assets are shown in Table 4.3.

Demand for new services will be managed through a combination of managing existing assets, upgrading of existing assets and providing new assets to meet demand and demand management. Demand management practices can also include non-asset solutions with a focus on providing the required service without the need for the organisation to invest in new or upgraded infrastructure. Management actions could include reducing the demand for the service or educating users around alternative options. It is important to ensure that these strategies consider the associated risks and consequences.

Opportunities identified to date for demand management are shown in Table 4.3. Further opportunities will be developed in future revisions of this Asset Management Plan.

**Table 4.3: Demand Management Plan**

Demand driver	Current position	Projection	Impact on services	Demand Management Plan																																										
City Growth	<p>2021 Statistics:</p> <p>Residents - 25,551 Businesses – 11,519 Daily Visitors – 321,500</p>	<p>2041 Forecast: 46,000 residents 2036 Target: 50,000 residents</p> <p>Anticipated ongoing business growth in line with residential city growth and South Australian State growth projections</p> <p>Anticipated daily visitor growth in line with South Australian State growth projections</p>	<p>City growth will place higher demands on Public Lighting and Electrical Infrastructure with increasing level of service expectations. This will likely result in the need to create additional assets to service community needs.</p>	<p>Delivery of prioritised upgrade/new projects identified in the Strategic Plan and key Corporate planning documents (referenced in Section 2.1) to enhance our Public Lighting and Electrical Infrastructure network and accommodate city growth through upgrading existing assets and creating new assets to align service provision with the evolving needs of the community.</p> <p>This Asset Management Plan will ensure asset renewals will consider and align where practical with these key upgrade/new initiatives.</p>																																										
Changing Demographic	<p>2021 Statistics</p> <table border="1"> <tr> <td>0 to 11 Years</td> <td>1,246</td> <td>(5%)</td> </tr> <tr> <td>12 to 17 Years</td> <td>587</td> <td>(2%)</td> </tr> <tr> <td>18 to 34 Years</td> <td>12,117</td> <td>(51%)</td> </tr> <tr> <td>35 to 49 Years</td> <td>4,409</td> <td>(19%)</td> </tr> <tr> <td>50 to 59 Years</td> <td>2,281</td> <td>(10%)</td> </tr> <tr> <td>60 to 69 Years</td> <td>2,233</td> <td>(10%)</td> </tr> <tr> <td>70 Years &amp; Above</td> <td>2,633</td> <td>(3%)</td> </tr> </table>	0 to 11 Years	1,246	(5%)	12 to 17 Years	587	(2%)	18 to 34 Years	12,117	(51%)	35 to 49 Years	4,409	(19%)	50 to 59 Years	2,281	(10%)	60 to 69 Years	2,233	(10%)	70 Years & Above	2,633	(3%)	<p>2041 Forecast</p> <table border="1"> <tr> <td>0 to 11 Years</td> <td>2,633</td> <td>(6%)</td> </tr> <tr> <td>12 to 17 Years</td> <td>1,501</td> <td>(3%)</td> </tr> <tr> <td>18 to 34 Years</td> <td>21,771</td> <td>(47%)</td> </tr> <tr> <td>35 to 49 Years</td> <td>8,933</td> <td>(19%)</td> </tr> <tr> <td>50 to 59 Years</td> <td>4,272</td> <td>(9%)</td> </tr> <tr> <td>60 to 69 Years</td> <td>3,274</td> <td>(7%)</td> </tr> <tr> <td>70 Years &amp; Above</td> <td>4,175</td> <td>(9%)</td> </tr> </table>	0 to 11 Years	2,633	(6%)	12 to 17 Years	1,501	(3%)	18 to 34 Years	21,771	(47%)	35 to 49 Years	8,933	(19%)	50 to 59 Years	4,272	(9%)	60 to 69 Years	3,274	(7%)	70 Years & Above	4,175	(9%)	<p>Changing expectations from a culturally and demographically diverse customer base will result in our Public Lighting and Electrical Infrastructure being subject to new demand.</p>	<p>Ongoing engagement with city users through annual City User Profile surveys and ensuring that Strategic Documents are updated on a cyclic basis to reflect changes with community expectations.</p> <p>Delivery of prioritised upgrade/new projects identified in the Strategic Plan and key Corporate planning documents (referenced in Section 2.1) to align service provision with the evolving needs of the community.</p> <p>This Asset Management Plan will ensure asset renewals will consider and align where practical with these key upgrade/new initiatives.</p>
0 to 11 Years	1,246	(5%)																																												
12 to 17 Years	587	(2%)																																												
18 to 34 Years	12,117	(51%)																																												
35 to 49 Years	4,409	(19%)																																												
50 to 59 Years	2,281	(10%)																																												
60 to 69 Years	2,233	(10%)																																												
70 Years & Above	2,633	(3%)																																												
0 to 11 Years	2,633	(6%)																																												
12 to 17 Years	1,501	(3%)																																												
18 to 34 Years	21,771	(47%)																																												
35 to 49 Years	8,933	(19%)																																												
50 to 59 Years	4,272	(9%)																																												
60 to 69 Years	3,274	(7%)																																												
70 Years & Above	4,175	(9%)																																												
Tourism & Event Growth	<p>A key objective in Council’s 2023-24 Business Plan and Budget was to provide ‘year round’ events that attract people to visit the City.</p> <p>Investment in public infrastructure has also been identified as part of the South Australian Tourism Plan (2020) and the SA Visitor Economy Sector Plan 2030.</p> <p>In 2020 annual tourism expenditure in Adelaide was estimated to be approximately \$3.9 billion.</p>	<p>Cultural and event infrastructure will be an ongoing and increasing priority for both the City of Adelaide and South Australian State Government.</p> <p>It is projected that annual tourism expenditure will continue to grow and it is estimated to be \$7.7 billion/year by 2030.</p>	<p>Increasing demands on Public Lighting and Electrical Infrastructure to facilitate tourism and event growth by supporting new cultural, civic and event infrastructure in the City and connecting city users to place through curated city experiences.</p>	<p>Delivery of prioritised upgrade/new projects identified in the Strategic Plan and key Corporate planning documents (referenced in Section 2.1) to support tourism and event growth.</p> <p>This Asset Management Plan will ensure asset renewals will be consider and align where practical with these key upgrade/new initiatives.</p>																																										

Demand driver	Current position	Projection	Impact on services	Demand Management Plan
Environmental Sustainability & Carbon Neutrality	<p>Changes to the global climate (climate change) are clear. There are documented increases in the average air and ocean temperature, widespread melting of snow and ice, and rising average sea levels.</p> <p>City of Adelaide's 2020-2024 Strategic Plan has an objective to become one of the world's first carbon neutral cities by 2025. Additionally, a Climate Action Plan (2022-2025) has been developed to ensure we continue to drive down our carbon footprint and mitigate climate impacts for our residents and visitors.</p> <p>Currently City of Adelaide is reviewing recycled materials for use in public lighting and electrical projects, where there is demonstrated environmental benefits that also consider cost and performance.</p>	<p>Inaction to climate change and climate risk will result in negative health impacts to our community and potentially impact to our businesses and economy. Reduced water availability and increasing heat will result in increased stress and resources required for maintaining and operating our assets.</p> <p>To effectively manage climate change and climate risk Council will need to continue to respond through substantial reductions in greenhouse gases (mitigation controls) and helping to prepare for and respond to the changing climate (adaptation controls).</p>	<p>There will be an increased demand to ensure we utilise more environmentally sustainable materials and construction technique for public lighting and electrical projects, with lower carbon footprint and improved circular economy outcomes.</p> <p>There will be an increased demand for improved Public Lighting to support active modes of transport at night time.</p> <p>The increasing uptake in electric vehicle usage for both public transport and private commuter vehicles, will result in additional demands for electric vehicle charging stations.</p>	<p>Our Strategic Planning, Asset Management and Project Delivery (including design and procurement) will continue to focus on ensuring that climate risk mitigation and adaption is a key focus.</p> <p>Ongoing reviews and updates to our design standards and technical specifications to ensure our assets transition towards having a lower carbon footprint with improved circular economy outcomes, as well as ensure they are more resilient to withstand extreme weather events.</p> <p>Delivery of prioritised upgrade/new projects identified in the Strategic Plan and key corporate planning documents (referenced in Section 2.1), which support environmental sustainability and climate risk mitigation and adaptation. This Asset Management Plan will ensure asset renewals will consider and align where practical with these key upgrade/new initiatives.</p> <p>Facilitating the implementation of additional EV charging stations within the City through partnerships in line with the Electrical Vehicle Charging Infrastructure Roadmap.</p>
Emerging Technology	<p>Asset construction techniques and associated materials are currently undertaken in line with industry standards</p> <p>Asset management systems and condition audit methodologies are in line with industry standards and best practice.</p> <p>Smart lighting platforms are available and can be utilised to operate, monitor and manage public lighting infrastructure.</p>	<p>Alternative construction techniques and materials with durability and sustainability benefits will continue to become more readily available and standardised.</p> <p>Asset management systems and technology will continue to evolve over time, particularly with respect to the collection of condition data and monitoring of asset deterioration over time.</p> <p>Intelligent Public Lighting systems are continually being developed and enhanced. It is anticipated they will provide further opportunities to optimise the operation eg timing/dimming, maintenance and reduce power consumption/utility costs for the organisation.</p>	<p>Improvements in construction techniques and materials could result in improved asset durability, increased asset lifespans, reduced whole-of-life costs and improved environmental outcomes.</p> <p>Improved asset information and systems will enable improved decision making and efficiencies with respect to optimising whole-of-life-costs and managing asset risks.</p> <p>Enhancements to intelligent Public Lighting systems will introduce efficiencies into the Public Lighting and Electrical Infrastructure, and potentially result in new and enhanced services being provided through emerging technologies.</p>	<p>Continue to partner with industry, to monitor and evaluate new and emerging technologies, with trials of new materials, approaches, and methodologies to inform appropriate changes to standards and practices.</p>
Legislation & Regulation	<p>Legislation exists which outlines requirements for how Council's must manage infrastructure assets.</p>	<p>There is potential for future changes to legislation will influence how Council's infrastructure is managed.</p>	<p>New legislation may impose or require changes to asset management planning principles and activities. They may include requirements that have a financial and/or service level impact that must be met.</p>	<p>Continue to monitor changes to legislation and ensure appropriate adaptation into asset management practices. Any material impacts would be considered as part of the Annual Business Plan and Budget process and included in the next revision of the Asset Management Plan.</p>



#### **4.4 Asset Programs to meet Demand**

The new assets required to meet demand will be acquired, donated or constructed. Additional assets are discussed in Section 5.5.

Acquiring new assets will commit City of Adelaide to ongoing operations, maintenance and renewal costs for the period that the service provided from the assets is required. These future costs are identified and considered in developing forecasts of future operations, maintenance and renewal costs.

All upgrade/new projects responding to demand will involve developing business cases, cost estimates and facilitating decision making to integrate upgrade/new project initiatives with operational asset management planning and the Long-Term Financial Plan. This process will be facilitated with Council and the Community through the Annual Business Plan & Budget Process.

#### **4.5 Climate Change Adaptation**

The impacts of climate change may have a significant impact on the assets we manage and the services they provide. In the context of the Asset Management Planning process climate change can be considered as both a future demand and a risk.

How climate change impacts on assets will vary depending on the location and the type of services provided, as will the way in which we respond and manage those impacts. As a minimum we consider how to manage our existing assets given potential climate change impacts for our region.

Risk and opportunities identified to date are shown in Table 4.5

**Table 4.5 Managing the Impact of Climate Change on Public Lighting and Electrical Infrastructure Assets and Services**

Climate Change Description	Projected Change	Potential Impact on Assets and Services	Management
Increasing temperatures and more frequent, long-running and intense heatwaves	<p>The number of days over 40°C to double by 2050</p> <p>Average temperatures to increase across all seasons by between 1.5°C and 2°C by 2050</p>	<p>Increased heat related damage to assets including damage to paint finishes and the overheating of electrical circuitry and electrical switchboards</p> <p>Reduced lifespan of Public Lighting and Electrical Infrastructure assets</p> <p>Increased costs to provide the same level of service</p> <p>Premature obsolescence as functionality is not met</p>	<p>Strategic Planning, Asset Management and Project Delivery (including design and procurement) will continue to focus on ensuring that climate risk mitigation and adaption is a key focus. Mitigation and adaptation measures will include:</p> <ul style="list-style-type: none"> <li>• Ongoing reviews and updates to our design standards and technical specifications to ensure our assets transition towards having a lower carbon footprint with improved circular economy outcomes as well as ensure they are more resilient to withstand extreme heat events</li> <li>• Proactively reviewing our asset management strategies with respect to the impacts of climate change, to ensure we continue to provide the agreed level of service at the lowest lifecycle cost</li> <li>• Reducing the impacts of heat through increasing canopy cover</li> </ul>
Less rain overall but more intense storms and flooding	<p>Average annual rainfall to decrease by 7% by 2050</p> <p>Intensity of heavy rainfall events to increase by at least 10% by 2050</p>	<p>Increased stormwater related damage to assets including electrical circuits shorting, operation outages and subsequent repair of assets to maintain operation.</p> <p>Reduced lifespan of Public Lighting and electrical assets</p> <p>Increased costs to provide the same level of service</p> <p>Premature obsolescence as functionality is not met</p>	<p>Strategic Planning, Asset Management and Project Delivery (including design and procurement) will continue to focus on ensuring that climate risk mitigation and adaption is a key focus. Mitigation and adaptation measures will consider:</p> <ul style="list-style-type: none"> <li>• Ongoing reviews and updates to our design standards and technical specifications to ensure our assets transition towards having a lower carbon footprint with improved circular economy outcomes as well as ensure they are more resilient to increased flood risk and inundation</li> <li>• Proactively reviewing our asset management strategies with respect to the impacts of climate change, to ensure we continue to provide the agreed level of service at the lowest lifecycle cost</li> </ul>

The impact of climate change on assets is a new and complex discussion and further impacts and management strategies will be considered and developed in future revisions of this Asset Management Plan. It is recommended to continue monitoring the impacts of climate conditions and associated cost implications as further investigation is undertaken and more data becomes available. This is included as a key action within this Asset Management Plans Improvement Plan.

## 5.0 LIFECYCLE MANAGEMENT PLAN

### 5.1 Lifecycle Management Overview

In order to effectively manage our assets, it is important to understand the relationship between all stages of the asset lifecycle. Effective asset management and sustainable financial planning requires a balance between the maintenance, renewal and disposal of existing assets and the delivery of new and upgraded assets.

Our goal is to provide assets that service the needs of the community, providing the agreed levels of service at the lowest lifecycle cost. To enable this, it is important to understand:

- How our assets are performing
- How our assets should be operated and maintained
- When our assets should be renewed
- When we should consider upgrading existing assets or constructing new assets
- How funding for new and upgraded assets is prioritised
- When we should consider disposing underperforming or underutilised assets

An overview of the asset lifecycle is shown in Figure 5.1 below:

**Figure 5.1: Asset Lifecycle Overview**



The lifecycle management plan details how CoA plans to manage and operate the assets at the agreed levels of service (Refer to Section 3) while managing life cycle costs.



## 5.2 Background Data

### 5.2.1 Physical parameters

The assets covered by this Asset Management Plan are shown in Table 5.2.1 and all figure values are shown in current day dollars.

**Table 5.2.1: Assets Covered by this Plan**

Asset Category	Quantity/Dimension	Replacement Value
Public Lighting and Electrical	7,829 street lighting columns	\$138.3 million
	9,986 street lights / luminaires	
	993 switchboards	
CCTV Network	153 cameras	\$6.2 million
EV Charging Stations	41 charging stations	\$1.08 million
Total		\$145.6 million

### 5.2.2 Asset capacity and performance

Assets are generally provided to meet design standards where these are available. However, there are insufficient resources to address all known deficiencies. Locations where deficiencies in service performance are known are detailed in Table 5.2.2.

**Table 5.2.2: Known Service Performance Deficiencies**

Asset / Location	Service Deficiency
Direct buried underground cabling	There are a number of locations where underground cabling is buried directly into the ground and does not have a protective conduit. Current design standards require for cabling to be installed within a protective conduit. Locations of direct buried cabling are being consolidated and will be verified in the condition audit scheduled for 2024/25 to inform asset renewal program priorities.
Luminaire technologies – High Intensity Discharge Lamps	A number of public lighting luminaires utilise High Intensity Discharge Lamps. These assets are considered to be old technology and their modern equivalent in LED technology provides better outcomes with respect to lighting levels, while also being more energy efficient with lower operating costs. This Asset Management Plan’s renewal program aims to convert all luminaires to LED technology.
Public lighting assets inherited from South Australia Power Networks (SAPN)	Through a legacy agreement a number of SAPN Public Lighting assets were gifted and transferred into CoA’s public lighting portfolio. The gifted assets included public lighting poles, luminaires and associated cabling. Many of the transferred assets are now in an aged condition and will require renewal in the short-medium term, forming part of this Asset Management Plan’s renewal program priorities.

SAPN assets - Public lighting levels	User engagement and customer service requests have identified that a number of locations lit by SAPN public lighting are providing a lower level of service and are not aligning with customer expectations. We will continue to work closely with SAPN to explore options to convert their public lighting network to LED technology and improve public lighting levels in these locations. Programs of work will be proposed through the Business Plan and Budget process annually as a Strategic Project.
Park Lands lighting– gaps in provision of lighting	There are a number of pathways within the Park Lands where no public lighting is currently provided. Installation of new public lighting infrastructure within the Park Lands, will be guided by the Public Lighting Strategy (to be developed) and relevant Park Lands Master Plans.
Traffic Intersections – Lighting levels	There are a number of traffic intersection sites within the City of Adelaide where opportunities to enhance safety, efficiency and reliability have been identified. The public lighting provisions at these sites are incrementally being improved through CoA’s renewal program and the Federal Government’s Blackspot Program.

### 5.2.3 Asset condition

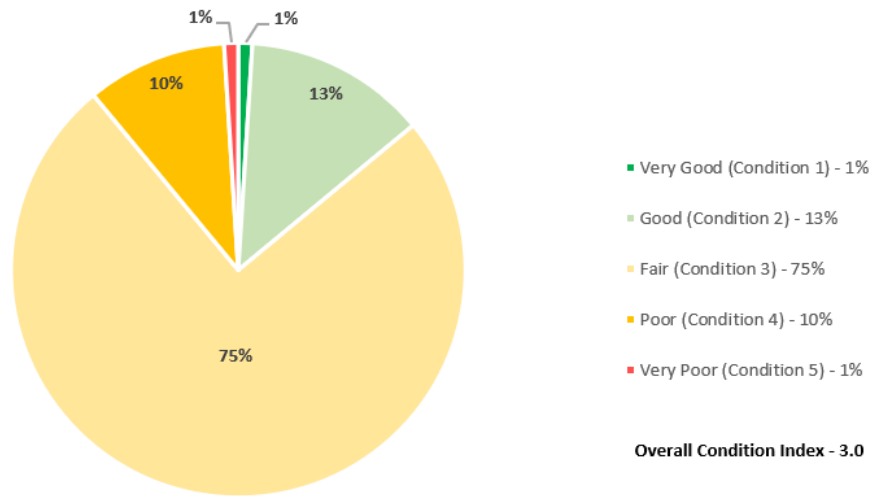
Condition is measured using a 1 - 5 grading system as detailed in Table 5.2.3. It is important that a consistent approach is used in reporting asset performance enabling effective decision support. A finer grading system may be used at a more specific level, however, for reporting in the Asset Management plan results are translated to a 1 – 5 grading scale for ease of communication.

**Table 5.2.3: Condition Grading System**

Condition Grading	Description of Condition
1	<b>Very Good:</b> free of defects, only planned and/or routine maintenance required
2	<b>Good:</b> minor defects, increasing maintenance required plus planned maintenance
3	<b>Fair:</b> defects requiring regular and/or significant maintenance to reinstate service
4	<b>Poor:</b> significant defects, higher order cost intervention likely
5	<b>Very Poor:</b> physically unsound and/or beyond rehabilitation, immediate action required

Public Lighting and Electrical assets are typically condition audited every 4 years, with the most recent audit undertaken in 2018. Figure 5.2.3 presents the predicted Public Lighting and Electrical Infrastructure condition distribution as of November 2023. Overall the majority of the Public Lighting and Electrical assets are rated in very good to fair condition (89%). However, 11% of the Public Lighting and Electrical Infrastructure is rated in a poor to very poor condition.

**Figure 5.2.3: Network Condition Profile**



A condition audit is planned to commence in the 2024/25 financial year. This revised data will provide a higher level of reliability in our asset condition information to inform future maintenance and renewal planning and will be utilised to inform a comprehensive update to this Asset Management Plan within the next two years.



### 5.3 Operations and Maintenance Plan

Operations include regular activities to provide services. Examples of typical operational activities include condition audits, asset inspections and utility costs.

Maintenance includes all actions necessary for retaining an asset as near as practicable to an appropriate service condition including regular ongoing day-to-day work necessary to keep assets operating. Examples of typical maintenance activities include streetlighting repairs, cleaning and lamping replacement, night audits to check operation of street light outages for CoA (and city areas lit by SA Power Networks streetlights), switchboard audits, CCTV Network camera cleaning, equipment repairs and legislative electrical testing. Requirements are informed by both customer service requests and proactive maintenance inspections.

Currently, maintenance activities are generally evaluated and prioritised with respect to annual budgets. This process is undertaken by experienced staff, where risk-based assessment and resource allocation considers the severity of the defect as well as its location. Any critical maintenance requirements that cannot be accommodated within exiting budgets are assessed and considered through regular budget reviews to ensure resources are appropriately re-allocated.

Following the completion of this Asset Management Plan, we will be reviewing operations and maintenance standards for Public Lighting and Electrical Infrastructure assets, with a view to develop more structured and proactive maintenance regimes which provide an acceptable balance between cost, risk, and customer expectations. This activity has been recognised as an action within the Improvement Plan of this Asset Management Plan (Section 8.2), where the associated financial impacts will need to be further considered in future revisions of this Asset Management Plan and the Long-Term Financial Plan.

Updated standards will document both maintenance intervention levels and response times. Intervention levels will document the criteria for actioning maintenance defects and response times will set targets that we aim to work within to repair defects. Typically, both of these elements will vary depending on the severity of the defect as well as its position/location within the asset hierarchy.

Monitoring whether maintenance activities are being delivered in accordance with the specified intervention levels and response times, will enable us to understand whether resourcing levels are sufficient. Where resourcing levels are identified as insufficient, additional budget requirements can be considered through the business plan and budget process, or intervention levels and response times can be adjusted with respect to budget constraints.

#### 5.3.1 Maintenance Budget Trends

The trend in maintenance budgets for all public lighting and electrical assets over the past 4 years is shown in Table 5.3.1.

**Table 5.3.1: Maintenance Budget Trends**

Year	Public Lighting and Electrical Infrastructure
2020-21	\$729,174
2021-22	\$795,177
2022-23	\$1,344,609
2023-24	\$1,478,327

### 5.3.2 Asset hierarchy

An asset hierarchy provides a framework for structuring data in an information system to assist in collection of data, reporting information and making decisions. The hierarchy includes the asset class and component used for asset planning and financial reporting and service level hierarchy used for service planning and delivery.

The hierarchy for each public lighting and electrical asset category is shown in Table 5.3.2.

**Table 5.3.2: Asset Service Hierarchy**

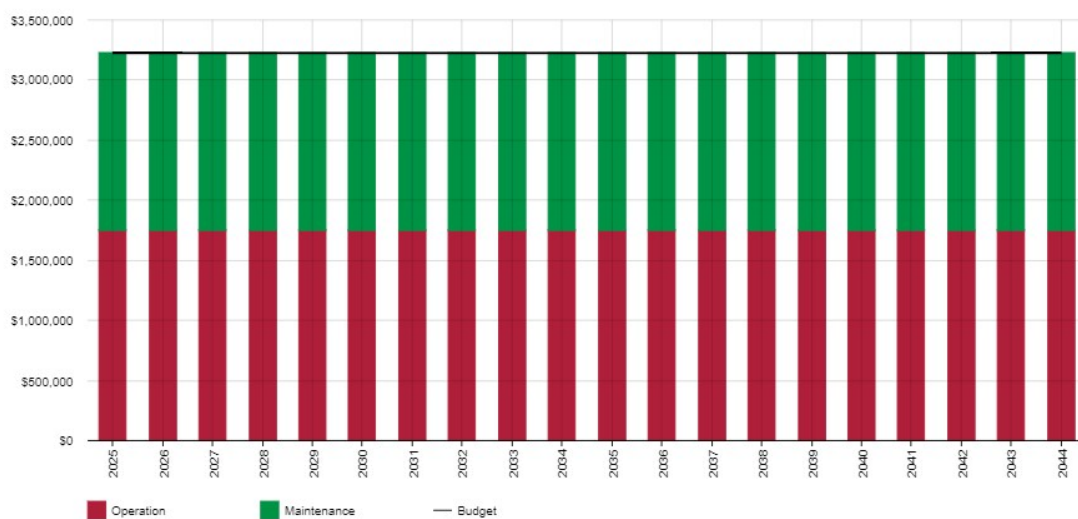
Asset Category	Asset Hierarchy
Public Lighting	City Streets (e.g. North Terrace)
	Residential Streets (e.g. Archer Street)
	Park Lands (e.g. Rymill Park Footpaths)
	Decorative Lighting
CCTV Network	All locations ranked equally
EV Charging Stations	UPark Carparking facilities
	City Streets
Defibrillators	All locations equally ranked

### 5.3.3 Summary of future operations and maintenance costs

Forecast operations and maintenance costs are expected to vary in relation to the total value of the asset stock. If additional assets are acquired, the future operations and maintenance costs are forecast to increase. If assets are disposed of the forecast operation and maintenance costs are expected to decrease.

The forecast operations and maintenance costs for the public lighting and electrical assets, relative to the proposed operations and maintenance budgets are shown in Figure 5.3.3. Future revisions of this Asset Management Plan will further review forecast requirements based on updated operations and maintenance standards. All values are shown in current day dollars.

**Figure 5.3.3 : Operations and Maintenance Summary**



## 5.4 Renewal Plan

Renewal is major capital work which does not significantly alter the original service provided by the asset, but restores, rehabilitates, replaces, or renews an existing asset to its original service potential. Work over and above restoring an asset to original service potential is considered to be an acquisition (new/upgrade) resulting in additional future operations and maintenance costs.

Asset renewal is typically undertaken to:

- Ensure ongoing reliability of existing infrastructure to deliver the service it was constructed to facilitate.
- Ensure infrastructure is of sufficient quality to meet the service requirements.
- Optimise whole-of-life costs, when maintenance activities are no longer economical.

This interim Asset Management Plan's 20-year renewal forecast has been derived based on the average annual asset consumption of the Public Lighting and Electrical Infrastructure asset class. It is supported by a detailed 4-year renewal plan, which has been developed utilising existing asset data captured within our Asset Management System, validated through on-site inspections, in conjunction with workshops with key operational staff to identify and discuss known performance deficiencies and risks.

We are currently in the process of transforming the maturity of our Public Lighting and Electrical Infrastructure asset management data. Preliminary spatial data work is scheduled for completion by June 2024, followed by a comprehensive condition complete by June 2025. This updated asset data will provide a more granular understanding of the condition of our existing assets. Following the completion of this condition audit, this Asset Management Plan will be comprehensively updated, utilising predictive deterioration modelling to improve renewal forecasting and overall asset management practices.

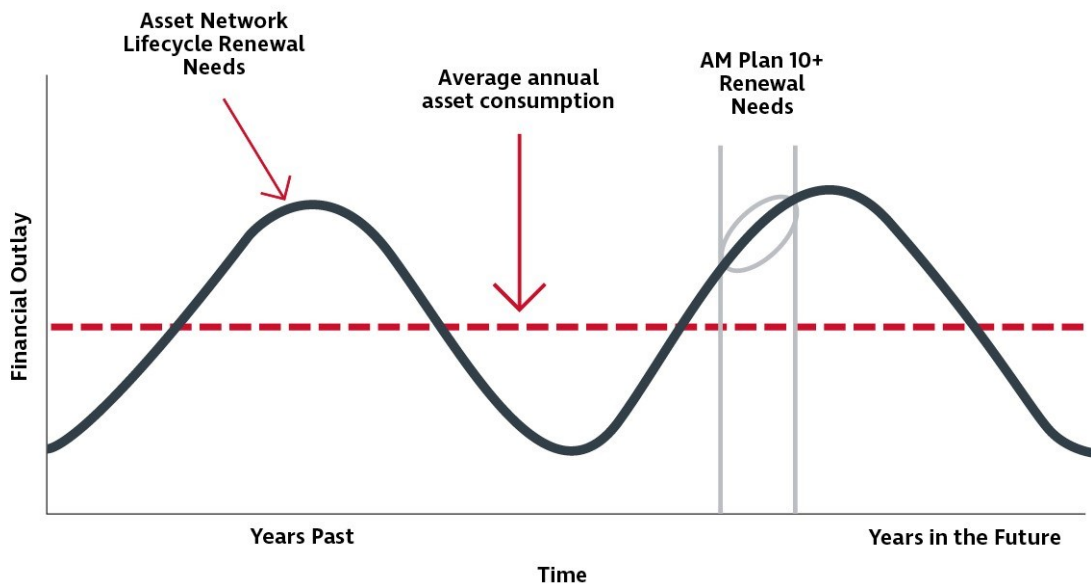
This Asset Management Plan's renewal strategy generally aims to minimise the number of assets that deteriorate into a poor condition and prohibit assets reaching a very poor condition. Assets can generally be cost effectively maintained and provide appropriate levels of service up to a fair condition, however assets in poor and very poor condition have higher risk profiles and maintenance treatments are generally not economical. This strategy ensures we can continue to provide services in line with the community's expectations, appropriately manage risk and optimise whole-of-life costs.

Asset renewal planning is undertaken with a holistic and integrated approach, to ensure consideration is given to asset functionality, adjacent assets and Council's higher-level strategic objectives (e.g. new and upgrade requirements). This allows capital works programming to be optimised through the development of logical works packages, that provide value to the community.

It is important to understand that infrastructure networks are comprised of assets with varying age profiles and different useful lives and replacement costs. This results in having to replace more assets in some periods when compared with others and means that it's very unlikely that asset renewal needs will be consistent over time. Figure 5.4-1 highlights a typical scenario of varying asset renewal expenditure requirements over the asset lifecycle.



**Figure 5.4-1: Asset Network Lifecycle Renewal Needs**



To account for fluctuations in asset lifecycle renewal needs and enable efficient resourcing planning, often there will be a need to smooth out expenditure requirements over multiple years through a combination of deferring renewal (where appropriate) and bringing scheduled works forward.

At times, this may result in a small number of assets exceeding prescribed renewal intervention criteria, requiring projects to be prioritised with respect to available budget. It is possible to prioritise renewals by identifying assets or asset groups that:

- Have a higher consequence of failure
- Have higher usage and the subsequent impact on users would be more significant
- Have higher than expected operational and maintenance costs

Prioritisation criteria used to inform the renewal forecasts within this Asset Management Plan include:

- Compliance with current legislative requirements
- Asset condition
- Asset hierarchy and criticality
- Cost effectiveness of maintenance investment
- Alignment with Strategic Plan objectives and corporate strategies
- Financial capacity and sustainable financial management principles
- Council decisions
- Asset functionality deficiencies
- Community interest

The typical useful lives and condition intervention level of assets used to develop projected asset renewal forecasts are shown in Table 5.4 Asset useful lives were last reviewed in 2023.

**Table 5.4: Useful Lives of Assets**

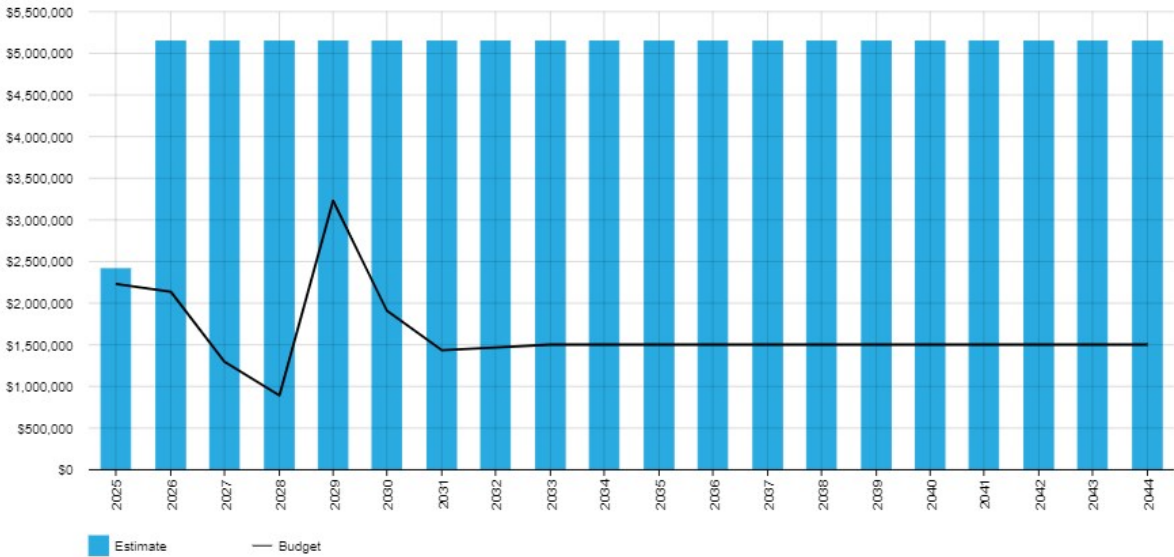
Asset Category	Asset Type	Intervention Level	Useful Life (years)
Public Lighting and Electrical	Luminaires	4	30
	Poles	4	30
	Brackets	4	30
	Electrical cables	4	30
	Electrical conduit	4	30
	Pits	4	30
	Switchboards	4	30
	C-Bus (lighting control)	4	30
CCTV Network	CCTV Camera – low resolution	4	12
	CCTV Camera – high resolution	4	5
	Equipment Hub	4	12
	Fibre Optic Network Cable	4	30
	Fibre Optic Network Conduit	4	30
	Servers	4	7
	Switches	4	7
EV Charging Stations	EV Charger	4	10
Defibrillators	Defibrillator Unit	4	8

**5.4.1 Summary of Future Renewal Costs**

The recommended asset renewal strategy aims to minimise the number of assets that deteriorate into condition 4 (target less than 5%) and prohibit assets reaching condition 5 (target 0%). This interim Asset Management Plan’s renewal forecast has been derived based on the average annual asset consumption of the Public Lighting and Electrical Infrastructure asset class. Increased renewal funding of \$5.15 million is required each year. Specific renewal intervention levels are documented in Appendix E.

The projected 20-year renewal forecast compared against the current Long-Term Financial Plan budget allocation for the Public Lighting and Electrical Infrastructure is shown in Figure 5.4.1 below (note: all figure values are shown in current day dollars). When comparing the forecast renewal costs against the existing budget allocation (black line), it is evident that there is a significant funding shortfall and additional funding is required to maintain current levels of service. Not funding the shortfall will result in the health of the Public Lighting and Electrical Infrastructure network to continue steadily decreasing over time, resulting in increased whole-of-life costs and risks of asset failure that cannot be rectified through maintenance resources.

**Figure 5.4.1: Forecast Renewal Costs**



## 5.5 Acquisition of Assets (New & Upgrade)

Acquisition reflects new assets that did not previously exist or works which will upgrade or improve an existing asset beyond its existing capacity. They may result from growth, demand, social or environmental needs. Assets may also be donated to the City of Adelaide.

Opportunities for acquisition of new assets, and upgrade of existing assets, are identified from various sources such as community requests, initiatives identified within strategic plans and corporate strategies as well as partnerships with third parties (e.g. State Government and Developers).

Potential new and upgrade works should be reviewed to verify that they are essential to City of Adelaide's needs and include analysis to understand ongoing operations, maintenance and renewal requirements to ensure that the services are sustainable over the longer term.

While this Asset Management Plan does not identify financial forecasts associated with new and upgrade projects, it does ensure required renewal scheduling is aligned (where practical) with key new and upgrade initiatives linked to our Strategic Plan through Integrated Delivery Planning.

Prioritisation and scheduling of new and upgrade works is currently undertaken on an annual basis through the business plan and budget process, where key prioritisation criteria include:

- Alignment with Strategic Plan objectives and corporate strategies
- Financial capacity and sustainable financial management principles
- Council decisions
- Asset functionality deficiencies
- Asset condition
- Compliance with current legislative requirements
- Community interest

The Resource Plan will provide a 4-year view of new and upgrade projects, resources, and budgets required to deliver our Strategic Plan objectives. It will inform the Long-Term Financial Plan and act as the key link between the Strategic Plan and Annual Business Plan & Budget.

Transformational new and upgrade projects will reference the Adelaide Design Manual that have allocated funding within the Resource Plan and Long-Term Financial Plan.

## 5.6 Disposal of Assets

Disposal includes any activity associated with the disposal of a decommissioned asset including sale, demolition or relocation. Disposal can be considered when an asset has been identified as underperforming, underutilised, or obsolete and does not provide value to the community.

This Asset Management Plan does not identify financial forecasts associated with asset disposal, however where recommended, significant assets will be identified for decommissioning and disposal through Council Reports. To enable informed decision making, reports will include any anticipated impacts to service provision as well as financial impacts including disposal costs, revenue gained and estimated reductions in annual operations and maintenance expenditure that will be included into the Business Plan and Budget and Long-Term Financial Plan.

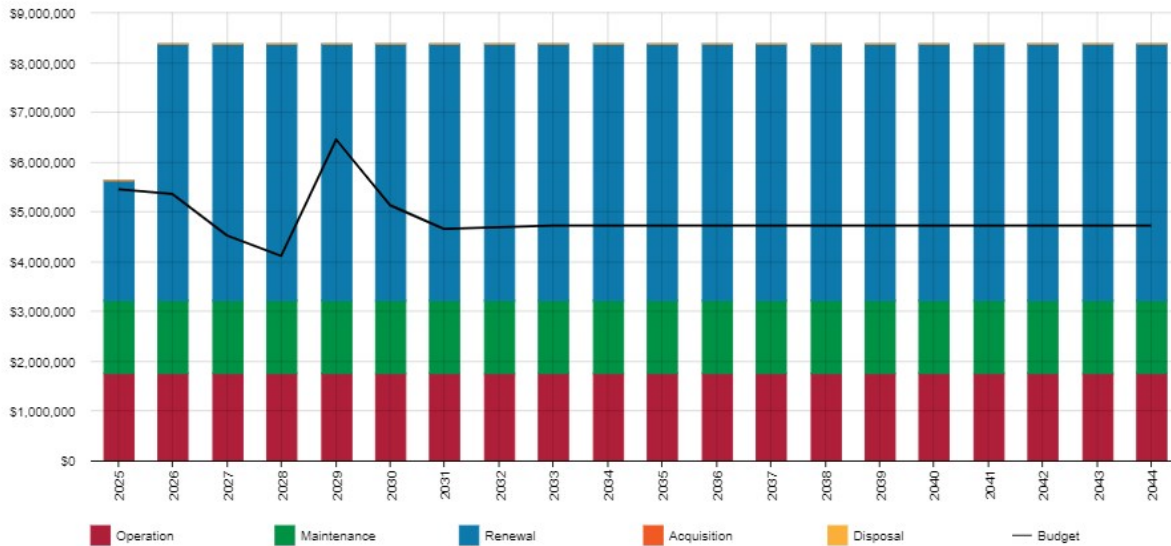


## 5.7 Summary of Asset Forecast Costs

The total financial projections from this Asset Management Plan are shown in Figure 5.7 below. These projections include forecast costs for acquisition, operation, maintenance, renewal, and disposal. These forecast costs are shown relative to the proposed budget.

The bars in the graphs represent the forecast costs needed to minimise the life cycle costs associated with the service provision. The proposed budget line indicates the estimate of available funding. The gap between the forecast work and the proposed budget is discussed in detail within sections 5.3 and 5.4.

**Figure 5.7 : Lifecycle Summary**



## 6.0 RISK MANAGEMENT PLANNING

The purpose of infrastructure risk management is to document the findings and recommendations resulting from the periodic identification, assessment and treatment of risks associated with providing services from infrastructure, using the fundamentals of International Standard ISO 31000:2018 Risk management – Principles and guidelines.

Risk Management is defined in ISO 31000:2018 as: ‘coordinated activities to direct and control with regard to risk’<sup>3</sup>.

An assessment of risks<sup>4</sup> associated with service delivery will identify risks that will result in loss or reduction in service, personal injury, environmental impacts, a ‘financial shock’, reputational impacts, or other consequences. The risk assessment process identifies credible risks, the likelihood of the risk event occurring, and the consequences should the event occur. The risk assessment should also include the development of a risk rating, evaluation of the risks and development of a risk treatment plan for those risks that are deemed to be non-acceptable.

### 6.1 Critical Assets

Critical assets are defined as those which have a high consequence of failure causing significant loss or reduction of service. Critical assets have been identified and along with their typical failure mode, and the impact on service delivery, are summarised in Table 6.1. Failure modes may include physical failure, collapse or essential service interruption.

**Table 6.1 Critical Assets**

Critical Asset / Component	Failure Mode	Impact
Public lighting located on Arterial and Primary Collector roads	Electrical fault and/or equipment failure	Road safety risks associated with inoperative public lighting at high risk location.
Public lighting located adjacent traffic control devices (e.g. pedestrian crossings, signalised intersections)	Electrical fault and/or equipment failure	Road safety risks associated with inoperative public lighting at high risk location.
Switchboards	Electrical fault and/or equipment failure Switchboard fire	Public safety risks including switchboard fires resulting from switchboard defects. Inoperative public lighting assets and disruption to service provision.
CCTV Network	Electrical fault and/or equipment failure	Public safety risks associated with inoperative cameras utilised by SAPOL for surveillance and monitoring.
Defibrillators	Electrical fault and/or equipment failure	Public safety risks associated with inoperative medical devices that are used in the event of a medical emergency.

By identifying critical assets and failure modes an organisation can ensure that investigative activities, condition inspection programs, maintenance and capital expenditure plans are targeted at critical assets.

<sup>3</sup> ISO 31000:2009, p 2

<sup>4</sup> REPLACE with Reference to the Corporate or Infrastructure Risk Management Plan as the footnote

## 6.2 Risk Assessment

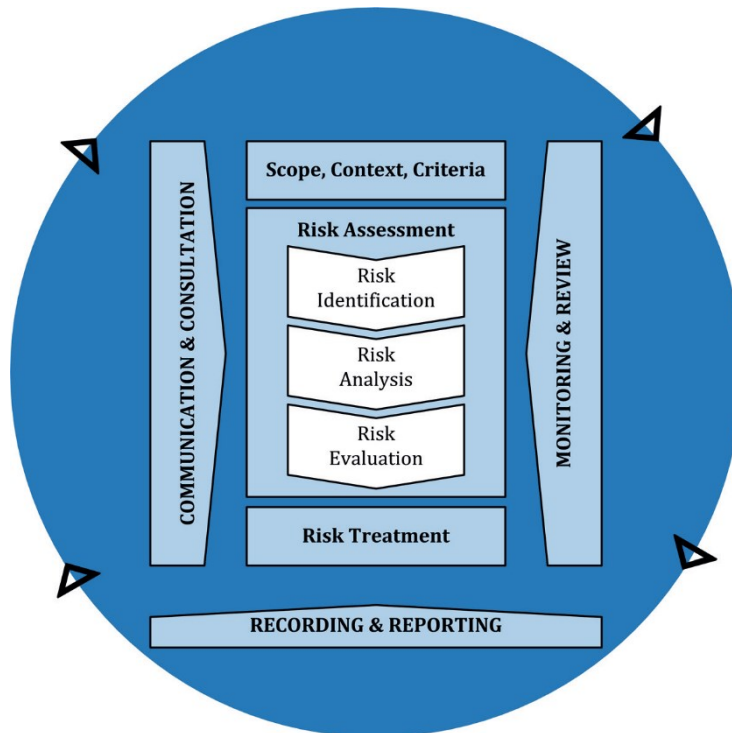
The risk management process used is shown in Figure 6.2 below.

It is an analysis and problem-solving technique designed to provide a logical process for the selection of treatment plans and management actions to protect the community against unacceptable risks.

The process is based on the fundamentals of International Standard ISO 31000:2018.

**Fig 6.2 Risk Management Process – Abridged**

*(Source: ISO 31000:2018, Figure 1, p9)*



The risk assessment process identifies credible risks, the likelihood of the risk event occurring, the consequences should the event occur, development of a risk rating, evaluation of the risk and development of a risk treatment plan for non-acceptable risks.

An assessment of risks associated with service delivery will identify risks that will result in loss or reduction in service, personal injury, environmental impacts, a 'financial shock', reputational impacts, or other consequences.

Critical risks are those assessed with 'Extreme' (requiring immediate corrective action) and 'High' (requiring corrective action) risk ratings identified in the Infrastructure Risk Management Plan. The residual risk and treatment costs of implementing the selected treatment plan is shown in Table 6.2. It is essential that these critical risks and costs are reported to management and the Strategic Risk and Internal Audit Group (SRIA).

**Table 6.2: Risks and Treatment Plans**

Asset at Risk	What can Happen	Risk Rating	Risk Treatment Plan	Residual Risk	Treatment Cost
All Public Lighting and Electrical Assets	Renewal, maintenance, and operational budgets are not adopted as recommended in Asset Management Plan, resulting in increased asset risk, reduced levels of service and increased whole of life costs	High	Reduce levels of service, to better align asset management activities with financial constraints. This will result in renewal and maintenance activities being prioritised, with respect to available budgets.	Medium	Within existing resources / budgets
	City growth will place higher demands on Public Lighting and Electrical Infrastructure with increasing level of service expectations, particularly for the creation of new assets to service community needs.	High	Delivery of prioritised upgrade/new projects to accommodate city growth through upgrading existing assets and creating new assets to align service provision with the evolving needs of the community.	Medium	Within existing resources / budgets  Upgrade/new projects are considered as part of the Annual Business Plan & Budget
	CoA do not have the financial capacity to undertake all recommended upgrades in conjunction with asset renewal projects to address functionality deficiencies and strategic objectives.	High	Upgrade opportunities associated with significant renewal projects are discussed with Council on an annual basis through the Business Plan and Budget Process. Prior to allocating resources to detailed design and construction activities, concept design options are developed with cost estimates and presented to CoA's Senior Leadership Team, to confirm project priority in conjunction with the recommended scope and timing of works.	Medium	Upgrade/new projects are considered as part of the Annual Business Plan & Budget
	Compromised decision making caused by insufficient asset information	High	Continue to regularly collect and update asset condition and financial information in our asset management system, to inform sound decision making.  Undertake predictive scenario modelling to effectively communicate the relationship between cost, level of service and risk to inform asset management strategies.	Medium	Within existing resources / budgets  Planned 2024/25 & 2025/26
	Accelerated asset deterioration and technical obsolescence, resulting in assets requiring renewal earlier than scheduled within Asset Management Plan.	High	Undertake regular condition audits and routine maintenance inspections to understand asset deterioration trends. Review emerging renewal priorities on a regular basis and update the 4-year renewal plan through the business plan and budget process on an annual basis as required.	Medium	Within existing resources / budgets
	Increasing operational and maintenance requirements and costs	High	Undertake routine maintenance inspections and maintenance planning to proactively identify financial risks associated with maintenance requirements to provide the agreed level of service.  Review and update maintenance standards, intervention levels and response times following adoption of Asset Management Plan.  Utilise established processes through the annual business plan and budget to submit a business case to re-forecast additional operational and maintenance costs.	Medium	Within existing resources / budgets



Asset at Risk	What can Happen	Risk Rating	Risk Treatment Plan	Residual Risk	Treatment Cost
All Public Lighting and Electrical Infrastructure Assets	Third party works associated with private development (e.g. temporary removal and reinstatements and temporary lighting provisions) are not constructed or implemented in accordance with CoA standards, resulting in potential hazards to public and/or premature asset failure and reduced useful life.	High	All third-party works require City Works Permits, to ensure works are delivered in accordance with City Works Guidelines and CoA standards.  Defects and omission inspections are undertaken following the completion of works to ensure compliance with CoA standards. Where defects are identified the third-party is instructed to undertake required rectifications works.	Medium	Within existing resources / budgets
	Gifted assets associated with developments are not constructed in accordance with CoA standards, resulting in potential hazards to public and/or premature asset failure and reduced useful life.	High	All third-party works require City Works Permits, to ensure works are delivered in accordance with City Works Guidelines and CoA standards. Additionally, where appropriate, infrastructure agreements are established with developers to ensure proposed works are designed and constructed in accordance with CoA standards.  Defects and omission inspections are undertaken following the completion of works to ensure compliance with CoA standards and/or infrastructure agreement. Where defects are identified, the developer is instructed to undertake required rectifications works.	Medium	Within existing resources / budgets
	Public lighting outages caused by electrical faults and/or equipment failure, resulting in major unplanned service disruption	High	Cyclic condition audits and routine maintenance inspections to monitor the condition of the public lighting assets. Delivery of planned and reactive maintenance programs with annual reviews of the capital works program to re-prioritise and incorporate emerging risks.	Medium	Within existing resources / budgets

### 6.3 Infrastructure Resilience Approach

The resilience of our infrastructure is vital to the ongoing provision of services to customers. To adapt to changing conditions we need to understand our capacity to ‘withstand a given level of stress or demand’, and to respond to possible disruptions to ensure continuity of service.

Our current measure of resilience is shown in Table 6.3 which includes the type of threats and hazards and the current measures that the organisation takes to ensure service delivery resilience.

Ensuring we remain resilient to the impacts of projected future climate will require ongoing investigation, monitoring and adaption within future revisions of this Asset Management Plan. This has been recognised as a key action within the Improvement Plan (Chapter 8).

**Table 6.3: Resilience Assessment**

Threat / Hazard	Assessment Method	Current Resilience Approach
Increasing temperatures and more frequent, long-running and intense heatwaves	Data SA Climate Projections for South Australia  Climate change modelling scenarios based on weather station data	Implementation key actions from the Climate Change Risk Adaptation Action Plan, which include: <ul style="list-style-type: none"> <li>Continuing to work with industry to identify new/superior products (or new applications) for application in CoA</li> </ul>
Less rain overall but more intense storms and flooding	Data SA Climate Projections for South Australia  Climate change modelling scenarios based on weather station data	Implementation key actions from the Climate Change Risk Adaptation Action Plan, which include: <ul style="list-style-type: none"> <li>Continuing to work with industry to identify new/superior products (or new applications) for application in CoA</li> <li>Identify the Public Lighting and Electrical assets that will be impacted by flooding in the future</li> </ul>

## 6.4 Service and Risk Trade-Offs

The decisions made in adopting this Asset Management Plan are based on the objective to achieve the optimum benefits from the available resources.

### 6.4.1 What we cannot do

Based on our current Long-Term Financial Plan budgets, there are some operations and maintenance activities and capital projects that are unable to be undertaken within the next 10 years.

#### Maintenance & Operations

While all proactive maintenance inspections and legislative maintenance works are fully accommodated within existing funding, not all preventative and general maintenance works can be accommodated within existing budget allocations to meet user expectations. Currently, general maintenance activities are evaluated and prioritised with respect to available budgets. While make-safe treatments are always undertaken as soon practical (generally within 24 hours), we are currently unable to undertake all works within the timeframes aligned with user expectations.

Following the completion of this Asset Management Plan, we will be updating maintenance standards to formalise maintenance intervention levels and response times, with the objective of establishing an acceptable balance between cost, risk, and customer expectations. This activity has been recognised as an action within the Improvement Plan of this Asset Management Plan (Chapter 8), where the associated financial impacts will need to be further considered in future revisions (by June 2025) of this Asset Management Plan and the Long-Term Financial Plan.

#### Renewal

There is an estimated \$3.11 million renewal funding shortfall on average per year over the next 10 years, to continue to provide services in line with community expectations and reduce whole-of-life costs.

#### Acquisition (New & Upgrade)

It will not be possible to deliver all new and upgrade initiatives identified within corporate strategies and action plans within the 10-year planning period. New and upgrade initiatives will be prioritised and assessed against key criteria (see section 5.5) and considered with respect to available budgets. This process will be undertaken in consultation with the community through the Business Plan and Budget process and the development of the Resource Plan.

#### **6.4.2 Service trade-off**

If there is forecast work (operations, maintenance, renewal, acquisition or disposal) that cannot be undertaken due to available resources, then this will result in service consequences for users. These service consequences include:

- Increased service disruptions and public lighting outages
- Reduced levels of service for the Public Lighting and Electrical Infrastructure (maintenance and renewal backlog)
- Reduced customer satisfaction levels associated with the management of our existing assets
- Intergenerational inequity (burdening future generations)

#### **6.4.3 Risk trade-off**

The operations and maintenance activities and capital projects that cannot be undertaken may sustain or create risk consequences. These risk consequences include:

- Increased safety risks associated with assets becoming inoperative
- Increased reputational risks associated with service provisions not aligning with community expectations
- Increased financial risks associated with surplus maintenance requirements that cannot be accommodated within existing budgets
- Increased financial risks associated with higher renewal and/or rehabilitation treatments as asset renewals are not funded at the optimal point in time
- Increased economic risk associated with reduced business activity, events and tourism
- Intergenerational inequity (burdening future generations)



## 7.0 FINANCIAL SUMMARY

This section contains the financial requirements resulting from the information presented in the previous sections of this Asset Management Plan. The financial projections will be improved as the discussion on desired levels of service and asset performance matures.

### 7.1 Financial Sustainability and Projections

#### 7.1.1 Sustainability of service delivery

There are two key indicators of sustainable service delivery that are considered in the Asset Management Plan for this service area. The two indicators are the:

- Asset renewal funding ratio (proposed renewal budget for the next 10 years / forecast renewal costs for next 10 years)
- Medium term forecast costs/proposed budget (over 10 years of the planning period)

#### Asset Renewal Funding Ratio

The Asset Renewal Funding Ratio is 36%. This is an important indicator and illustrates that over the next 10 years we expect to have 36% of the funds required for the optimal renewal of assets. The forecast renewal work along with the proposed renewal budget, and the cumulative shortfall, is illustrated in Appendix C.

Contributing factors for the gap between the forecast renewal costs and current budgets include:

- Not achieving our Asset Renewal Funding Ratio targets over the past 4 financial years as a result of Covid-19 resourcing impacts and project delays associated with post-pandemic market saturation.
- Undertaking a comprehensive review of existing funding allocations and appropriately re-forecasting asset renewal requirements within this Asset Management Plan.
- Ensuring we accurately recognise asset replacement costs, utilising current unit rates that take into consideration increasing costs associated with inflation and industry escalations.

#### Medium Term – 10 Year Financial Planning Period

This Asset Management Plan identifies the forecast operations, maintenance and renewal costs required to provide an agreed level of service to the community over a 10 year period. This provides input into 10 year financial and funding plans aimed at providing the required services in a sustainable manner. This forecast work can be compared to the proposed budget over the first 10 years of the planning period to identify any funding shortfall.

The forecast operations, maintenance and renewal costs for the Public Lighting and Electrical Infrastructure over the 10 year planning period is approximately \$8.10 million on average per year.

The current (budgeted) operations, maintenance and renewal funding is approximately \$4.99 million on average per year giving a 10 year funding shortfall of approximately \$3.11 million on average per year.

This indicates that approximately 62% of the forecast costs needed to provide the services documented in this Asset Management Plan are accommodated in the proposed budget. Note, these calculations exclude acquired assets.

Providing sustainable services from infrastructure requires the management of service levels, risks, forecast outlays and financing to achieve a financial indicator of approximately 100% for the first years of the Asset Management Plan and ideally over the 10 year life of the Long-Term Financial Plan.

### 7.1.2 Forecast Costs (outlays) for the Long-Term Financial Plan

Providing services in a financially sustainable manner requires a balance between the forecast outlays required to deliver the agreed service levels with the planned budget allocations in the Long-Term Financial Plan.

A gap between the forecast outlays and the amounts allocated in the financial plan indicates further work is required on reviewing service levels in the Asset Management Plan or revising the Long-Term Financial Plan.

The forecast costs (outlays) required for consideration in the 10 year Long-Term Financial Plan are shown below in Table 7.1.2, where forecast costs are shown in 2024/25 dollar values.

**Table 7.1.2: Forecast Costs (Outlays) for the Long-Term Financial Plan**

Year	Acquisition	Operation	Maintenance	Renewal	Disposal
2024/25	\$0	\$1,747,000	\$1,478,327	\$2,414,000	\$0
2025/26	\$0	\$1,747,000	\$1,478,327	\$5,150,000	\$0
2026/27	\$0	\$1,747,000	\$1,478,327	\$5,150,000	\$0
2027/28	\$0	\$1,747,000	\$1,478,327	\$5,150,000	\$0
2028/29	\$0	\$1,747,000	\$1,478,327	\$5,150,000	\$0
2029/30	\$0	\$1,747,000	\$1,478,327	\$5,150,000	\$0
2030/31	\$0	\$1,747,000	\$1,478,327	\$5,150,000	\$0
2031/32	\$0	\$1,747,000	\$1,478,327	\$5,150,000	\$0
2032/33	\$0	\$1,747,000	\$1,478,327	\$5,150,000	\$0
2033/34	\$0	\$1,747,000	\$1,478,327	\$5,150,000	\$0

For the next revision of this Asset Management Plan, it is recommended to include the acquisition costs (upgrade/new) that are specified within the Resource Plan and accommodated within the Long-Term Financial Plan. This has been recognised as an action within the Improvement Plan (Chapter 8). Costs associated with asset disposal, will continue to be identified through Council Reports and accommodated within the annual Business Plan and Budget and Long-Term Financial Plan as required.

### 7.2 Funding Strategy

The proposed funding for assets is outlined in the City of Adelaide Annual Business Plan and Budget and Long-Term Financial Plan.

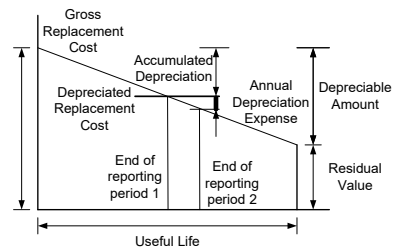
The financial strategy of the entity determines how funding will be provided, whereas the Asset Management Plan communicates how and when this will be spent, along with the service and risk consequences of various service alternatives.

### 7.3 Valuation Forecasts

#### 7.3.1 Asset Valuations

The best available estimate of the value of assets included in this Asset Management Plan are shown below. The assets are valued at fair value cost to replace service capacity in accordance with Australian Accounting Standards.

Gross Replacement Cost	\$145.6 million
Depreciable Amount	\$145.6 million
Depreciated Replacement Cost <sup>5</sup>	\$62.5 million
Depreciation	\$5.1 million



#### 7.3.2 Valuation Forecast

Asset values are forecast to increase as additional assets are added to the network.

Additional assets will generally add to the operations and maintenance needs in the longer term. Additional assets will also require additional costs due to future renewals. Any additional assets will also add to future depreciation forecasts.

Increases to asset valuation are formally recognised through asset revaluations in conjunction with updates to Asset Management Plans, which are both typically undertaken every 4 years.

<sup>5</sup> Also reported as Written Down Value, Carrying or Net Book Value.

## 7.4 Key Assumptions Made in Financial Forecasts

In compiling this Asset Management Plan, it was necessary to make some assumptions. This section details the key assumptions made in the development of this Asset Management plan and provides readers with an understanding of the level of confidence in the data behind the financial forecasts.

Key assumptions made in this Asset Management Plan are:

- All current assets will remain within the organisation's ownership throughout the planning period.
- Renewal forecasts are based on costs associated with like for like or modern equivalent replacement and are based off current design standards and any legislated requirements. They do not account for additional costs to upgrade assets or install new ancillary assets.
- Renewal forecasts for this Interim Asset Management Plan have been derived based on the average annual asset consumption of the Public Lighting and Electrical Infrastructure asset class. This financial figure is derived utilising asset quantities, renewal unit rates and asset useful life information.
- Renewal forecasts have been escalated into FY24/25 dollars (based on historic and forecast inflation).
- Renewal forecasts account for external design requirements, where costs are allocated within each FY of the Asset Management Plan as a "Design Program" where applicable (typically between 5-10% of annual construction costs)
- Renewal planning consider asset condition, asset functionality and integrated planning principles.
- Renewal forecasts have been aligned where appropriate with upgrade projects approved by Council and recognised in the Long-Term Financial Plan (e.g. Main Streets).
- Renewal forecasts do not account for internal staff resourcing. These resources are to be allocated through a capital resource overhead and accommodated into the Long-Term Financial Plan separately.
- Asset useful lives align with current levels of service and are based on the judgment and experience of internal staff.
- Asset useful life and remaining useful life estimates assume existing maintenance resourcing levels are continued.
- Acquisition (upgrade/new) costs are not recognised within this Asset Management Plan. These costs will be recognised in the Resource Plan and incorporated into Long-Term Financial Plan separately.
- Operations and maintenance forecasts are prioritised and delivered with respect to existing budget (standards to be reviewed and associated cost impacts to be incorporated into a future revision of this Asset Management Plan).
- Operations and maintenance forecasts do not currently account for the future acquisition of new assets through upgrade/new projects or gifted assets (to be considered through the annual business plan and budget and incorporated into future revisions of this Asset Management Plan).
- The Long-Term Financial Plan will appropriately escalate financial outlays communicated within this Asset Management Plan.



## 7.5 Forecast Reliability and Confidence

The forecast costs, proposed budgets, and valuation projections in this Asset Management Plan are based on the best available data. For effective asset and financial management, it is critical that the information is current and accurate. Data confidence is classified on a A - E level scale<sup>6</sup> in accordance with Table 7.5-1.

**Table 7.5-1: Data Confidence Grading System**

Confidence Grade	Description
A. Very High	Data based on sound records, procedures, investigations and analysis, documented properly and agreed as the best method of assessment. Dataset is complete and estimated to be accurate $\pm 2\%$
B. High	Data based on sound records, procedures, investigations and analysis, documented properly but has minor shortcomings, for example some of the data is old, some documentation is missing and/or reliance is placed on unconfirmed reports or some extrapolation. Dataset is complete and estimated to be accurate $\pm 10\%$
C. Medium	Data based on sound records, procedures, investigations and analysis which is incomplete or unsupported, or extrapolated from a limited sample for which grade A or B data are available. Dataset is substantially complete but up to 50% is extrapolated data and accuracy estimated $\pm 25\%$
D. Low	Data is based on unconfirmed verbal reports and/or cursory inspections and analysis. Dataset may not be fully complete, and most data is estimated or extrapolated. Accuracy $\pm 40\%$
E. Very Low	None or very little data held.

The estimated confidence level for the reliability of data used in this Asset Management Plan is considered to be of a medium confidence level. Further, more granular assessment is shown in Table 7.5.2.

**Table 7.5.2: Data Confidence Assessment for Data used in Asset Management Plan**

Data	Confidence Assessment	Comment
Demand drivers	High	Based off corporate planning documents and strategies
Growth projections	High	Based off State government projections and industry research and analysis
Acquisition forecast	Low	Not accommodated within this Asset Management Plan
Operation forecast	High	Based off known requirements and known costs for condition audits and utility costs.
Maintenance forecast	Medium	Maintenance requirements are not forecasted, currently just aligned to existing budget allocations
Asset values	Medium	Asset revaluation was last undertaken in 2019/20. Renewal forecasts have utilised these figures, with escalations to represent anticipated costs to deliver works in 2024/25 dollars
Asset useful lives	Medium	In line with industry standards with regular review

<sup>6</sup> IPWEA, 2015, IIMM, Table 2.4.6, p 2 | 71.

Condition modelling	Low	Due to the low reliability of existing asset condition information, renewal forecasts have been derived based on the average annual asset consumption of the Public Lighting and Electrical Infrastructure asset class, rather than from condition information for individual assets. Further works are recognised in the improvement plan to define assets at amore granular level to improve condition auditing and deterioration modelling.
Disposal forecast	Low	Not accommodated within this Asset Management Plan

## 8.0 PLAN IMPROVEMENT AND MONITORING

### 8.1 Status of Asset Management Practices

#### 8.1.1 Accounting and financial data sources

This Asset Management Plan utilises accounting and financial data. The source of the data is from the accounting module of CoA’s Asset Management System (Assetic).

#### 8.1.2 Asset management data sources

This Asset Management Plan also utilises asset management data. The source of the data is from CoA’s Asset Management System (Assetic).

### 8.2 Improvement Plan

It is important that an entity recognise areas of their Asset Management Plan and planning process that require future improvements to ensure effective asset management and informed decision making. The improvement plan generated from this Asset Management Plan is shown in Table 8.2.

**Table 8.2: Improvement Plan**

Task	Task	Responsibility	Resources Required	Timeline
1	Comprehensive update of this Asset Management Plan following the completion of spatial data improvements, asset condition audit and asset revaluation.	Infrastructure Planning	Within existing resource allocations	2025-26
2	Finalise a 4-year Resource Plan to identify key upgrade/new projects to deliver Council’s Strategic Plan objectives. Once key projects are recognised within the Long Term Financial Plan, Asset Management Plans will be updated to ensure associated acquisition costs (upgrade/new) and ongoing operational and maintenance costs are appropriately recognised, in conjunction with any scheduling adjustments required for asset renewal programs.	Strategy, Insights & Performance, with organisational support  Infrastructure Planning	Within existing resource allocations	2024-25
3	Finalise the Public Lighting Strategy to identify key priority projects for inclusion within the Resource Plan. Asset Management Plans to be reviewed and updated where required, considering any impacts to planned asset renewal programs.	Infrastructure Planning	Within existing resource allocations	2024-25
4	Continue to review asset renewal forecasts and requirements for existing EV charging stations as the City of Adelaide Electrical Vehicle Charging Infrastructure Roadmap is implemented.	Infrastructure Planning	Within existing resource allocations	2024-25
5	Review and update operations and maintenance standards, to develop more structured and proactive maintenance regimes which provide an acceptable balance between cost, risk, and customer expectations. Include changes into future revisions of this Asset Management Plan and Long Term Financial Plan.	Infrastructure Planning, City Operations	Within existing resource allocations	2024-25 2025-26
6	Continue to work in partnership with both the State and Federal Governments to pursue external funding opportunities for both renewal and significant upgrade/new Public Lighting and Electrical Infrastructure projects.	Infrastructure Planning	Within existing resource allocations	Ongoing

7	Continue to undertake regular condition audits and revaluation for all our Public Lighting and Electrical Infrastructure assets within the nominated 4-year cycles, including regular review of asset useful lives.	Infrastructure Planning	Within existing resource allocations	Ongoing
8	Continue to review our technical standards and their application across the City and Park Lands with respect to climate resilience, performance, whole-of-life cost, amenity, and heritage requirements.	Infrastructure Planning, Technical Services	Within existing resource allocations	Ongoing
9	Continue to monitor forecast climate change impacts to ensure we remain resilient through proactively implementing appropriate mitigation and adaptation controls.	Sustainability, Infrastructure Planning	Within existing resource allocations	Ongoing
10	Improve the capture of carbon emission data for technical standards to support lower carbon decision making	Low Carbon & Circular Economy, Infrastructure Planning, Technical Services	Led by existing resources, with external support identified through the Business Plan and Budget	Ongoing
11	Improve the capture of carbon emission data for project procurement to support lower carbon decision making	Low Carbon & Circular Economy, Procurement, Infrastructure Delivery	Led by existing resources, with external support identified through the Business Plan and Budget	Ongoing
12	Engage with the community and seek feedback regarding levels of customer satisfaction for CCTV Cameras and Electrical Vehicles Charging Station assets for the next revision of this Asset Management Plan.	Infrastructure Planning	Within existing resource allocations	2025-26
13	Review of corporate performance measure targets for customer satisfaction, to assist with performance gap analysis	Strategy, Insights & Performance, Infrastructure Planning	Within existing resource allocations	2024-25
14	Review and standardise asset hierarchies for all asset classes within Public Lighting and Electrical Infrastructure assets in context with the Streets, Park Lands and Buildings Categories.	Infrastructure Planning, City Operations	Within existing resource allocations	2024-25
15	Review customer service requests codes to better align with Level of Service reporting and operational and maintenance sub-activities.	Infrastructure Planning, City Operations, Customer Centre	Within existing resource allocations	2024-25
16	Further develop processes to ensure asset data is updated following the completion of contracted maintenance work and emergency asset replacement resulting from vandalism or knockdowns	Infrastructure Planning, City Operations	Within existing resource allocations	2024-25



### 8.3 Monitoring and Review Procedures

This Asset Management Plan will be reviewed during the annual budget planning process and revised to show any material changes in service levels, risks, forecast costs and proposed budgets as a result of budget decisions.

The Asset Management Plan will be reviewed and updated annually to ensure it represents the current service level, asset values, forecast operations, maintenance, renewals, acquisition and asset disposal costs and planned budgets. These forecast costs and proposed budgets will be incorporated into the Long-Term Financial Plan once completed.

This Asset Management Plan is scheduled to be comprehensively updated in the 2025-26 Financial Year following the completion of spatial data improvements, asset condition audit and asset revaluation. It has a maximum life of 4 years and will require complete revision and updating within two years of a general Council election, pursuant to section 122 of the Local Government Act 1999 (SA).

### 8.4 Performance Measures

The effectiveness of this Asset Management Plan can be measured in the following ways:

- The degree to which the required forecast costs identified in this Asset Management Plan are incorporated into the Long-Term Financial Plan
- The degree to which the 1-5 year detailed works programs, budgets, business plans and corporate structures consider the 'global' works program trends provided by the Asset Management Plan
- The degree to which the existing and projected service levels and service consequences, risks and residual risks are incorporated into the Strategic Planning documents and associated plans
- The Asset Renewal Funding Ratio achieving the Organisational target (90-110%)
- Achieving Technical Level of Service objectives
- Reviewing changes to customer service request numbers and customer satisfactory surveys
- Progressing with the implementation of Improvement Actions identified in Table 8.2
- Reviewing and update of the Plan at minimum every four years

## 9.0 REFERENCES

- IPWEA, 2006, 'International Infrastructure Management Manual', Institute of Public Works Engineering Australasia, Sydney, [www.ipwea.org/IIMM](http://www.ipwea.org/IIMM)
- IPWEA, 2015, 3rd edn., 'International Infrastructure Management Manual', Institute of Public Works Engineering Australasia, Sydney, [www.ipwea.org/IIMM](http://www.ipwea.org/IIMM)
- IPWEA, 2008, 'NAMS.PLUS Asset Management', Institute of Public Works Engineering Australasia, Sydney, [www.ipwea.org/namsplus](http://www.ipwea.org/namsplus).
- IPWEA, 2015, 2nd edn., 'Australian Infrastructure Financial Management Manual', Institute of Public Works Engineering Australasia, Sydney, [www.ipwea.org/AIFMM](http://www.ipwea.org/AIFMM).
- IPWEA, 2020 'International Infrastructure Financial Management Manual', Institute of Public Works Engineering Australasia, Sydney
- IPWEA, 2018, Practice Note 12.1, 'Climate Change Impacts on the Useful Life of Assets', Institute of Public Works Engineering Australasia, Sydney
- IPWEA, 2012, Practice Note 6 Long-Term Financial Planning, Institute of Public Works Engineering Australasia, Sydney, <https://www.ipwea.org/publications/ipweabookshop/practicenotes/pn6>
- IPWEA, 2014, Practice Note 8 – Levels of Service & Community Engagement, Institute of Public Works Engineering Australasia, Sydney, <https://www.ipwea.org/publications/ipweabookshop/practicenotes/pn8>
- ISO, 2014, ISO 55000:2014, Overview, principles and terminology
- ISO, 2018, ISO 31000:2018, Risk management – Guidelines
- City of Adelaide 2020-2024 Strategic Plan, <https://www.cityofadelaide.com.au/about-council/plans-reporting/strategic-planning/>
- AS/NZS 1158 Series - Provides minimum standards for Public Lighting and specifies performance and design requirements.
- AS/NZS 3000 - This standard sets out the requirements for the design, construction and verification of electrical installations

## 10.0 APPENDICES

**Appendix A    Operation Forecast**

The forecast operational costs for the Public Lighting and Electrical Infrastructure are shown below. Future revisions of this Asset Management Plan will further review forecast requirements based on updated operations and maintenance standards. All values are shown in current day dollars.

**Table A - Operation Forecast Summary**

Year	Operation Forecast	Additional Operation Forecast	Total Operation Forecast
2024-25	\$1,747,000	\$0	\$1,747,000
2025-26	\$1,747,000	\$0	\$1,747,000
2026-27	\$1,747,000	\$0	\$1,747,000
2027-28	\$1,747,000	\$0	\$1,747,000
2028-29	\$1,747,000	\$0	\$1,747,000
2029-30	\$1,747,000	\$0	\$1,747,000
2030-31	\$1,747,000	\$0	\$1,747,000
2031-32	\$1,747,000	\$0	\$1,747,000
2032-33	\$1,747,000	\$0	\$1,747,000
2033-34	\$1,747,000	\$0	\$1,747,000

**Appendix B Maintenance Forecast**

The forecast maintenance costs for the Public Lighting and Electrical Infrastructure are shown below. Future revisions of this Asset Management Plan will further review forecast requirements based on updated operations and maintenance standards. All values are shown in current day dollars.

**Table B - Maintenance Forecast Summary**

Year	Maintenance Forecast	Additional Maintenance Forecast	Total Maintenance Forecast
2024-25	\$1,478,327	\$0	\$1,478,327
2025-26	\$1,478,327	\$0	\$1,478,327
2026-27	\$1,478,327	\$0	\$1,478,327
2027-28	\$1,478,327	\$0	\$1,478,327
2028-29	\$1,478,327	\$0	\$1,478,327
2029-30	\$1,478,327	\$0	\$1,478,327
2030-31	\$1,478,327	\$0	\$1,478,327
2031-32	\$1,478,327	\$0	\$1,478,327
2032-33	\$1,478,327	\$0	\$1,478,327
2033-34	\$1,478,327	\$0	\$1,478,327



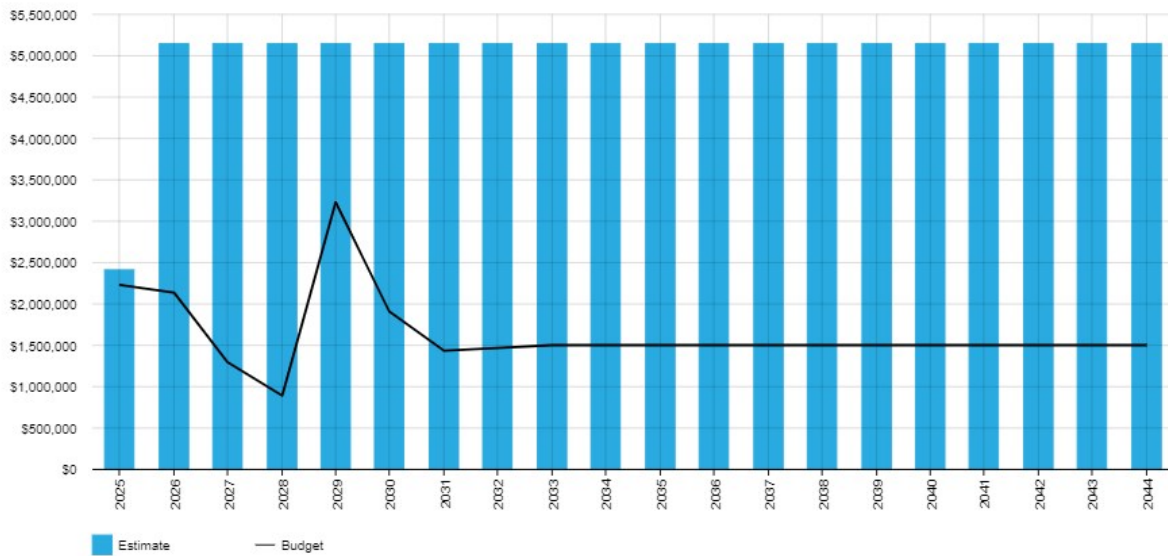
## Appendix C Renewal Forecast Summary

The forecast renewal costs for the Public Lighting and Electrical Infrastructure, relative to current renewal budgets are shown below, in conjunction with the annual renewal budget shortfall and the cumulative budget shortfall over the 10-year planning period. All Forecast costs are shown in 2024-25 dollar values.

**Table C - Renewal Forecast Summary**

Year	Renewal Forecast	Renewal Budget	Annual Budget Shortfall	Cumulative Budget Shortfall
2024-25	\$2,414,000	\$2,232,950	\$181,050	\$181,050
2025-26	\$5,150,000	\$2,137,455	\$3,012,545	\$3,193,595
2026-27	\$5,150,000	\$1,298,457	\$3,851,543	\$7,045,138
2027-28	\$5,150,000	\$893,688	\$4,256,312	\$11,301,450
2028-29	\$5,150,000	\$3,230,150	\$1,919,850	\$13,221,300
2029-30	\$5,150,000	\$1,911,518	\$3,238,482	\$16,459,782
2030-31	\$5,150,000	\$1,435,384	\$3,714,616	\$20,174,398
2031-32	\$5,150,000	\$1,468,000	\$3,682,000	\$23,856,398
2032-33	\$5,150,000	\$1,502,758	\$3,647,242	\$27,503,640
2033-34	\$5,150,000	\$1,502,758	\$3,647,242	\$31,150,882

Across the 10-year planning period, the forecast renewal costs are \$48.8 million, with a current budget allocation of \$17.6 million, resulting in a cumulative budget shortfall of \$31.15 million. This equates to an asset renewal funding ratio of 36%.



## Appendix D Budget Summary by Lifecycle Activity

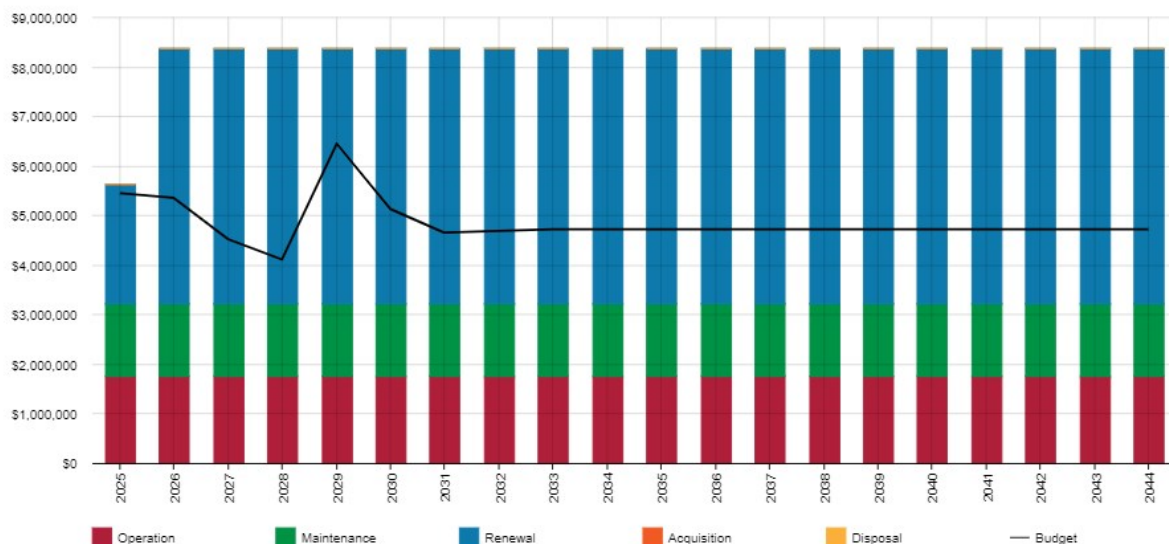
The forecast costs (outlays) required for consideration in the 10 year Long-Term Financial Plan are provided in shown below. These costs include renewal, maintenance, and operations of our existing assets. For the next revision of this Asset Management Plan, it is recommended to include the acquisition costs (upgrade/new) that are specified within the Resource Plan and are accommodated within the Long-Term Financial Plan. This has been recognised as an action within the Improvement Plan (Chapter 8). Costs associated with asset disposal, will continue to be identified through Council Reports and accommodated within the annual Business Plan and Budget and Long-Term Financial Plan as required. All forecast renewal costs are shown in 2024/25 dollar values and operations/maintenance costs are shown in 2023/24 dollar values.

**Table D – Budget Summary by Lifecycle Activity**

Year	Acquisition *	Operation	Maintenance	Renewal	Disposal
2024-25	\$0	\$1,747,000	\$1,478,327	\$2,414,000	\$0
2025-26	\$0	\$1,747,000	\$1,478,327	\$5,150,000	\$0
2026-27	\$0	\$1,747,000	\$1,478,327	\$5,150,000	\$0
2027-28	\$0	\$1,747,000	\$1,478,327	\$5,150,000	\$0
2028-29	\$0	\$1,747,000	\$1,478,327	\$5,150,000	\$0
2029-30	\$0	\$1,747,000	\$1,478,327	\$5,150,000	\$0
2030-31	\$0	\$1,747,000	\$1,478,327	\$5,150,000	\$0
2031-32	\$0	\$1,747,000	\$1,478,327	\$5,150,000	\$0
2032-33	\$0	\$1,747,000	\$1,478,327	\$5,150,000	\$0
2033-34	\$0	\$1,747,000	\$1,478,327	\$5,150,000	\$0

\*Costs accounted for within the Resource Plan and incorporated into Long-Term Financial Plan separately (i.e. not through the Asset Management Plan)

**Figure D: Budget Summary by Lifecycle Activity**



## Appendix E Asset Renewal Intervention Levels

The useful lives and condition intervention level of assets used to develop projected asset renewal forecasts are shown in Table 5.4 Asset useful lives were last reviewed in 2023.

**Table 5.4: Useful Lives of Assets**

Asset Category	Asset Type	Intervention Level	Useful Life (years)
Public Lighting and Electrical	Luminaires	4	30
	Poles	4	30
	Brackets	4	30
	Electrical cables	4	30
	Electrical conduit	4	30
	Pits	4	30
	Switchboards	4	30
	C-Bus (lighting control)	4	30
CCTV Network	CCTV Camera – low resolution	4	12
	CCTV Camera – high resolution	4	5
	Equipment Hub	4	12
	Fibre Optic Network Cable	4	30
	Fibre Optic Network Conduit	4	30
	Servers	4	7
	Switches	4	7
EV Charging Stations	EV Charger	4	10
Defibrillators	Defibrillator Unit	4	8



CITY OF  
ADELAIDE